

# AQUASPEC FAUCETS

MODEL - Z82100-XL SERIES  
GOOSENECK SPOUT



## TECHNICAL INFORMATION

**FLOW:** 2.2 GPM [8.3L] PRESSURE COMPENSATING AERATOR\*

**MAXIMUM PRESSURE:** 125 PSI

**MAXIMUM TEMPERATURE:** 160° F

\* OTHER AERATORS AVAILABLE BY REQUEST

**IMPORTANT** THE WATER SUPPLY LINES MUST BE THOROUGHLY FLUSHED BEFORE INSTALLATION TO PREVENT FOREIGN MATTER AND DEBRIS FROM CLOGGING AND/OR DAMAGING INTERNAL COMPONENTS AND THEREBY PREVENTING THE FAUCET FROM FUNCTIONING PROPERLY

## INSTALLATION INSTRUCTIONS

1. REMOVE GOOSENECK BASE (#3) FROM CARTON, INSTALL GASKET (#4A) ONTO BASE ASSEMBLY.
2. MOUNT BASE ASSEMBLY (#3) TO DECK USING MOUNTING NUT (#4C) AND LOCK WASHER (#4B). FOR WALL MOUNTED (WM) OPTION, MOUNTING HARDWARE IS TO BE PROVIDED BY THE CONTRACTOR.
3. CONNECT SUPPLY PIPING TO GOOSENECK BASE (#3) USING 1/2" RISER NUT (#4D).
4. ASSEMBLE SPOUT TO BASE USING SPLIT WASHERS (#2C) FOR SWING SPOUT MOUNTING OR SPACER WASHER (#2D) FOR RIGID MOUNTING.
5. TURN SUPPLY WATER ON AND OPERATE FAUCET CHECKING FOR LEAKS.
6. INSTALL AERATOR INTO FAUCET AND HAND TIGHTEN INTO FAUCET SPOUT. IT MAY BE NECESSARY TO REMOVE AND CLEAN THE AERATOR AT START UP.

## MAINTENANCE

1. YOUR ZURN FAUCET HAS A HIGHLY POLISHED NICKEL CHROME PLATED FINISH. CLEAN WITH SOAP AND WATER OR A MILD CLEANER WHICH IS SAFE FOR CHROME PLATING. DO NOT USE ACIDS OR TOILET BOWL CLEANER AS THEY WILL DAMAGE THE FINISH.

## REPAIR PARTS

G63367 MOUNTING COMPONENTS FOR GOOSENECK SPOUT

Trouble Shooting Guide		
Problem	Cause	Solution
NO WATER COMES OUT OF FAUCET SPOUT. ALL SUPPLIES ARE ON.	AERATOR IS CLOGGED.	REMOVE AERATOR. REMOVE DEBRIS AND REINSTALL AERATOR
WATER DEFLECTS AT AN ANGLE FROM THE FAUCET SPOUT	AERATOR HAS DEBRIS	REMOVE AERATOR. REMOVE DEBRIS AND REINSTALL AERATOR

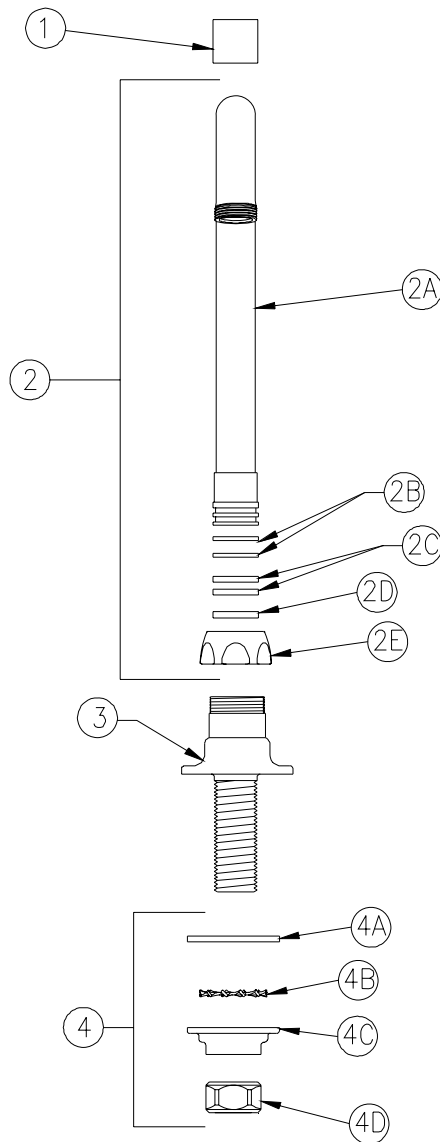
ZURN INDUSTRIES, LLC ♦ COMMERCIAL BRASS OPERATION ♦ 2640 SOUTH WORK STREET ♦ FALCONER NY 14733

Phone: 1-800-997-3876 ♦ Fax: 1-919-775-3541 ♦ www.zurn.com

In Canada: ZURN INDUSTRIES LIMITED ♦ 3544 Nashua Drive ♦ Mississauga, Ontario L4V1L2 ♦ Phone: 905/405-8272 Fax: 905/405-1292

PAGE 1 OF 2

Form # CF1430 Date: 1/19/11  
C.N. No. 127300 Rev.



Z821B0-XL SHOWN

Item	Part Number	Description	Qty.
1	G63504	3/4"-27 Female Aerator	1
2	G67852	5-3/8" Centerline Gooseneck Spout Assembly	1
2A	92866002	5-3/8" Centerline Gooseneck 'B' Spout	1
2B	58155018	O-Rings	2
2C	59666001	Split Swing Washers	2
2D	59436001	Spacer Washer	1
2E	59435001	Spout Nut	1
3	G67930	Base Assembly	1
4	G63367	Mounting Hardware	1
4A	60549001	Gasket	1
4B	61613019	Lockwasher	1
4C	59530002	Mounting Nut	1
4D	59532001	1/2" NPSM Riser Nut	1