

STIEBEL ELTRON

CF Plus Series: 48 kW, 54 kW, 60 kW, 72 kW | NEMA 3 Engineering Specification Sheet

Specifications

Model	CF Plus 48 kW, CF Plus 54 kW, CF Plus 60 kW, CF Plus 72 kW
Phase	3-phase
Inlet/outlet pipe connection	3/4" or 1" female NPT
Heat exchanger material	316L stainless steel
Enclosure rating	NEMA 3 shown, NEMA 4/4X available
Operating pressure range	4-145 psi (0.28-10 bar)
Temperature setpoint options (programmed at factory, user adjustable)	60-180 °F (32-82 °C)
Number of heating elements	12
Minimum activation flow (hot start)	1.7 gpm (6.4 l/m) for DN 20 flowmeter 2.7 gpm (10.2 l/m) for DN 25 flowmeter
Maximum flow at 60 psi	22.5 gpm (85.2 l/m) for DN 20 flowmeter 40 gpm (151.4 l/m) for DN 25 flowmeter



Model	Part Number	Voltage	Phase	kW	Amps	3P Breaker Size (A)	Temperature Rise °F				
							3 gpm	4 gpm	5 gpm	10 gpm	20 gpm
CF Plus 48 kW	CFPLUS-048-208	208	3-phase delta	45.07	125.09	150	>100	77	62	31	15
	CFPLUS-048-240	240	3-phase delta	50.00	120.28	150	>100	85	68	34	17
	CFPLUS-048-480	480	3-phase delta	50.00	60.14	70	>100	85	68	34	17
	CFPLUS-048-575	575	3-phase delta	47.99	48.19	60	>100	82	66	33	16
CF Plus 54 kW	CFPLUS-054-208	208	3-phase delta	54.08	150.11	175	>100	92	74	37	18
	CFPLUS-054-240	240	3-phase delta	54.05	130.02	150	>100	92	74	37	18
	CFPLUS-054-480	480	3-phase delta	54.05	65.01	80	>100	92	74	37	18
CF Plus 60 kW	CFPLUS-060-208	208	3-phase delta	63.09	175.13	200	>100	>100	86	43	22
	CFPLUS-060-240	240	3-phase delta	60.00	144.34	175	>100	>100	82	41	21
	CFPLUS-060-480	480	3-phase delta	60.00	72.17	80	>100	>100	82	41	21
CF Plus 72 kW	CFPLUS-072-208	208	3-phase delta	72.00	199.85	225	>100	>100	98	49	25
	CFPLUS-072-240	240	3-phase delta	72.00	173.21	200	>100	>100	98	49	25
	CFPLUS-072-480	480	3-phase delta	72.00	86.60	100	>100	>100	98	49	25
	CFPLUS-072-575	575	3-phase delta	72.00	72.29	80	>100	>100	98	49	25



Certified to ANSI/UL Std. 499
Conforms to CAN/CSA
Std. C22.2 No.88

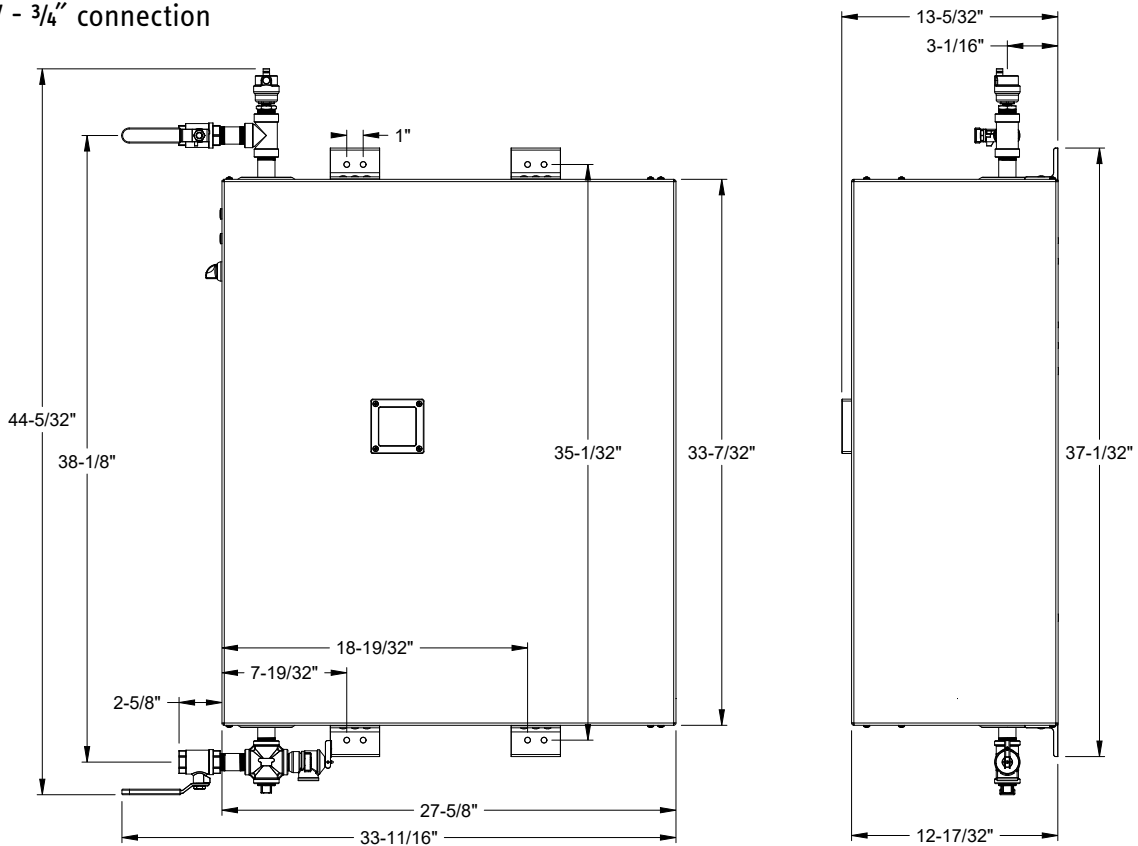


6 years against leakage /
2 years against defects in
workmanship & materials

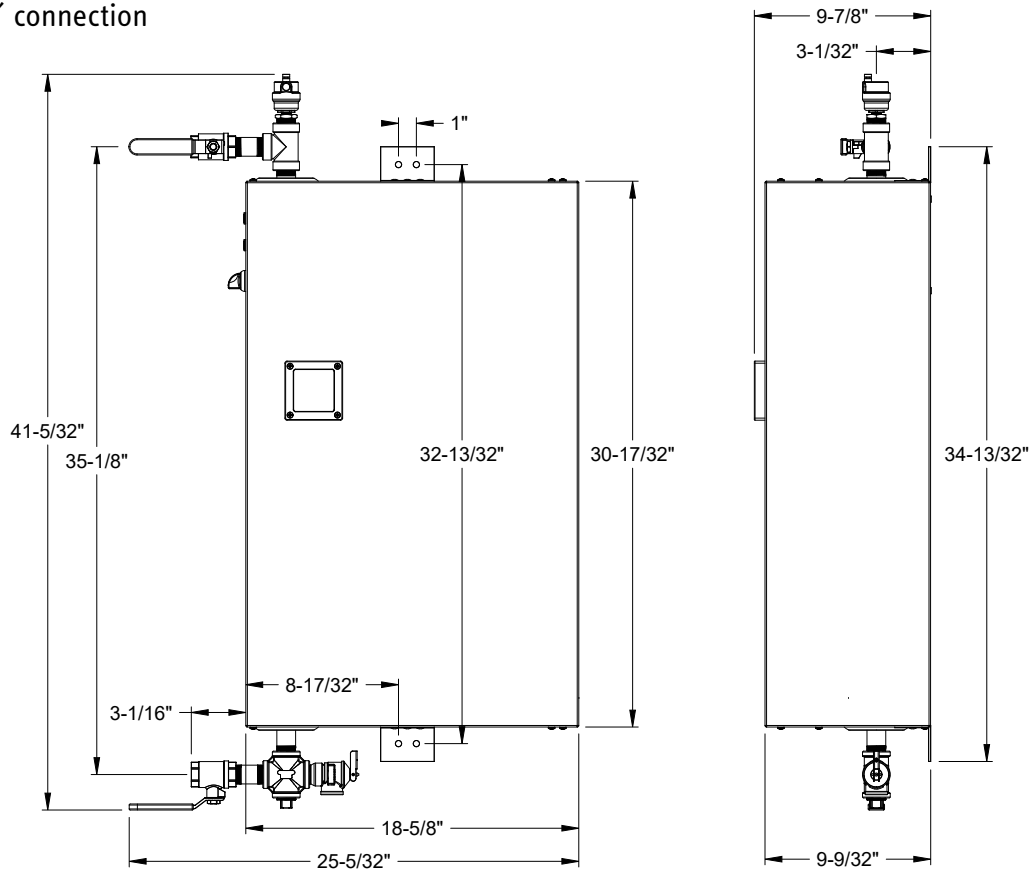
rev. 2.2026 Due to our continuous process of engineering and technological advancement, specifications may change without notice.

Dimensions

208/240 V - 3/4" connection



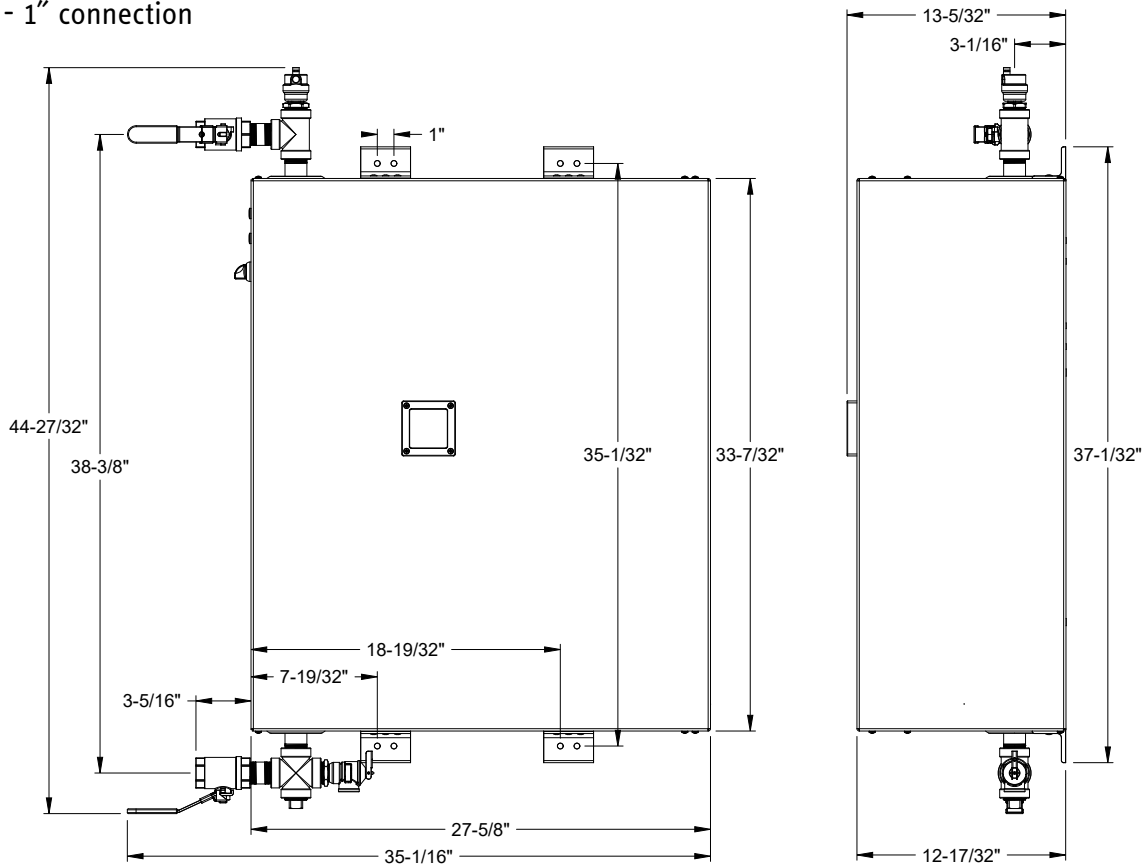
480/575 V - 3/4" connection



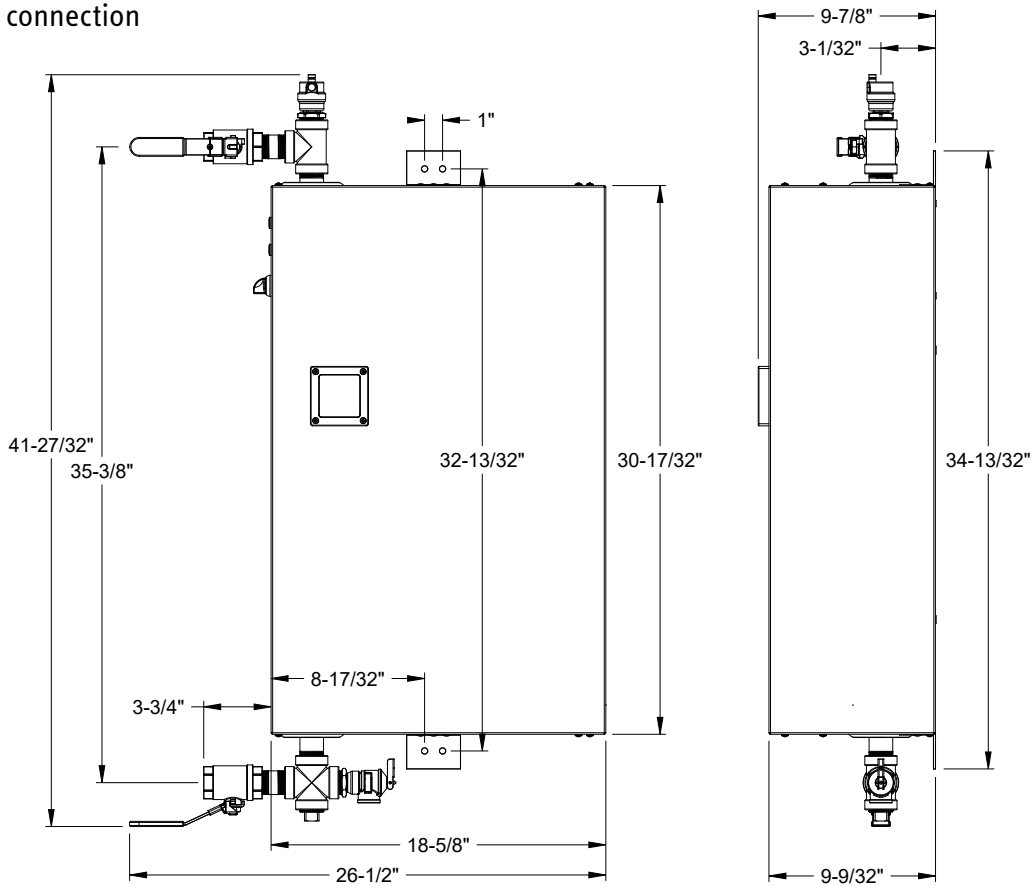
rev. 2.2026 Due to our continuous process of engineering and technological advancement, specifications may change without notice.

STIEBEL ELTRON

208/240 V - 1" connection

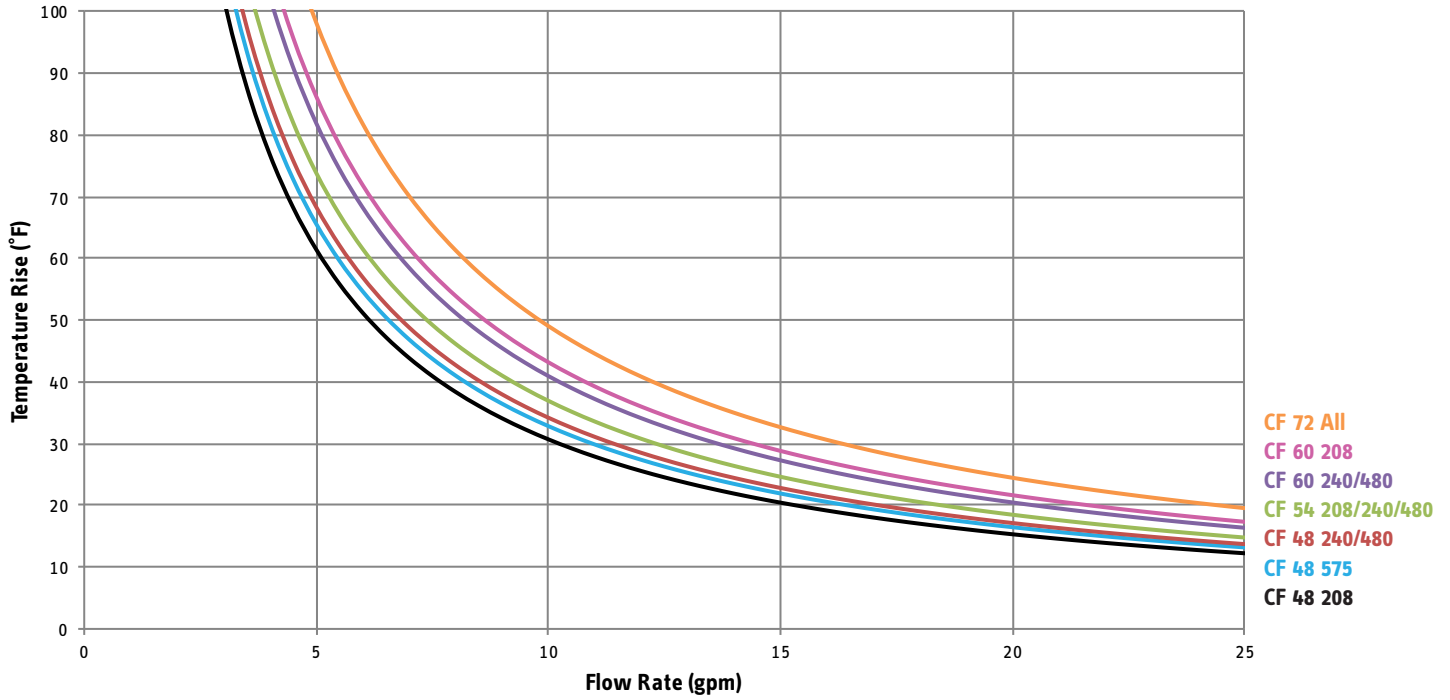


480/575 V - 1" connection

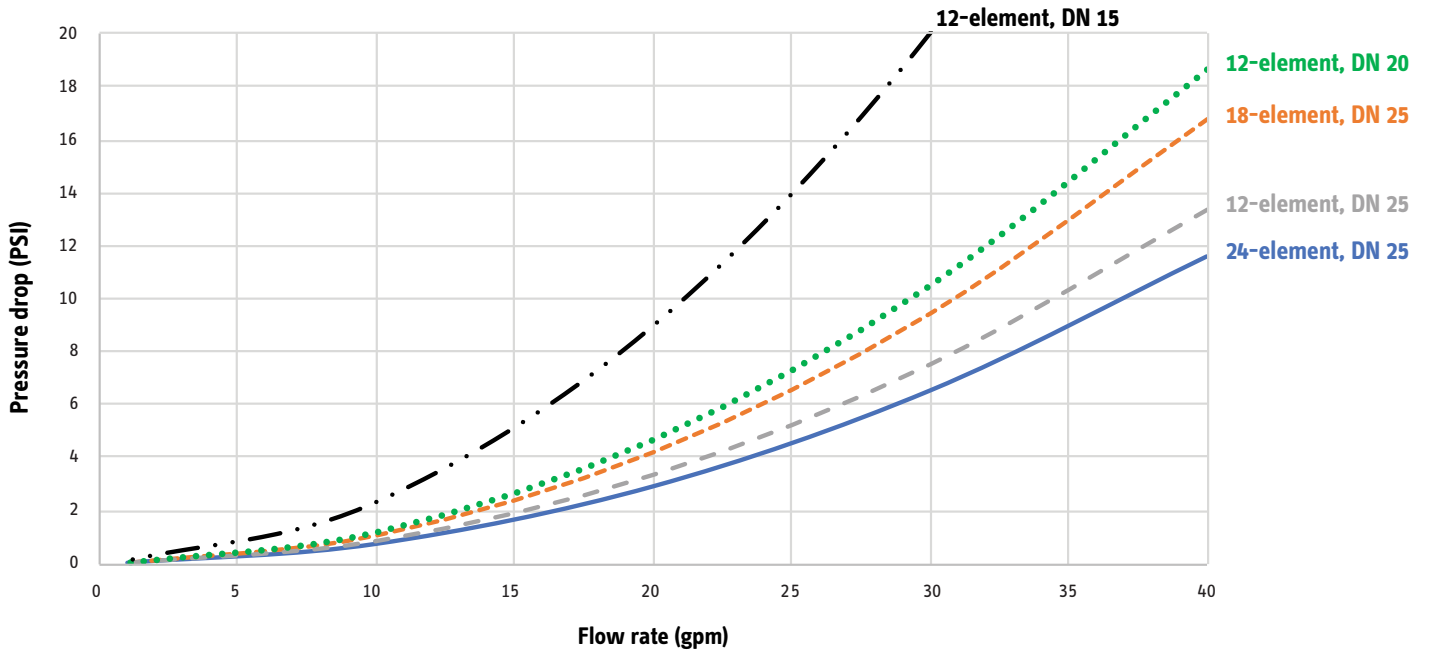


rev. 2.2026 Due to our continuous process of engineering and technological advancement, specifications may change without notice.

Temperature Rise vs. Flow Rate



Pressure Drop vs. Flow Rate



rev. 2.2026 Due to our continuous process of engineering and technological advancement, specifications may change without notice.