

STIEBEL ELTRON

CES Plus Series: 48 kW, 54 kW, 60 kW, 72 kW | NEMA 3 Engineering Specification Sheet

Specifications

| | |
|---|--|
| Model | CES Plus 48 kW, CES Plus 54 kW, CES Plus 60 kW, CES Plus 72 kW |
| Phase | 3-phase |
| Inlet/outlet pipe connection | 1" female NPT |
| Heat exchanger material | 316L stainless steel |
| Enclosure rating | NEMA 3 shown, NEMA 4/4X available |
| Operating pressure range | 4-145 psi (0.28-10 bar) |
| Maximum temperature output | 90 °F (32 °C) |
| Temperature adjustment range | 60-90 °F (16-32 °C) |
| Temperature adjustment increment | 1 °F (1 °C) |
| Number of heating elements | 12 |
| Minimum activation flow | 2.7 gpm (10.2 l/m) for DN 25 flowmeter |
| Maximum flow at 60 psi | 40 gpm (151.4 l/m) |



| Model | Part Number | Voltage | Phase | kW | Amps | 3P Breaker Size (A) | Temperature Rise °F | | | | |
|----------------|------------------|---------|---------------|-------|--------|---------------------|---------------------|-------|-------|--------|--------|
| | | | | | | | 3 gpm | 4 gpm | 5 gpm | 10 gpm | 20 gpm |
| CES Plus 48 kW | CESPLUS-048-208 | 208 | 3-phase delta | 45.07 | 125.09 | 150 | >100 | 77 | 62 | 31 | 15 |
| | CESPLUS-048-240 | 240 | 3-phase delta | 50.00 | 120.28 | 150 | >100 | 85 | 68 | 34 | 17 |
| | CESPLUS-048-480 | 480 | 3-phase delta | 50.00 | 60.14 | 70 | >100 | 85 | 68 | 34 | 17 |
| | CESPLUS-048-575 | 575 | 3-phase delta | 47.99 | 48.19 | 60 | >100 | 82 | 66 | 33 | 16 |
| CES Plus 54 kW | CESPLUS-054-208 | 208 | 3-phase delta | 54.08 | 150.11 | 175 | >100 | 92 | 74 | 37 | 18 |
| | CESPLUS-054-240 | 240 | 3-phase delta | 54.05 | 130.02 | 150 | >100 | 92 | 74 | 37 | 18 |
| | CESPLUS-054-480 | 480 | 3-phase delta | 54.05 | 65.01 | 80 | >100 | 92 | 74 | 37 | 18 |
| CES Plus 60 kW | CESPLUS-060-208 | 208 | 3-phase delta | 63.09 | 175.13 | 200 | >100 | >100 | 86 | 43 | 22 |
| | CESPLUS-060-240 | 240 | 3-phase delta | 60.00 | 144.34 | 175 | >100 | >100 | 82 | 41 | 21 |
| | CESPLUS-060-480 | 480 | 3-phase delta | 60.00 | 72.17 | 80 | >100 | >100 | 82 | 41 | 21 |
| CES Plus 72 kW | CESPLUS-072-208D | 208 | 3-phase delta | 72.00 | 199.85 | 225 | >100 | >100 | 98 | 49 | 25 |
| | CESPLUS-072-240D | 240 | 3-phase delta | 72.00 | 173.21 | 200 | >100 | >100 | 98 | 49 | 25 |
| | CESPLUS-072-480D | 480 | 3-phase delta | 72.00 | 86.60 | 100 | >100 | >100 | 98 | 49 | 25 |
| | CESPLUS-072-575D | 575 | 3-phase delta | 72.00 | 72.29 | 80 | >100 | >100 | 98 | 49 | 25 |



Certified to ANSI/UL Std. 499
Conforms to CAN/CSA
Std. C22.2 No.88

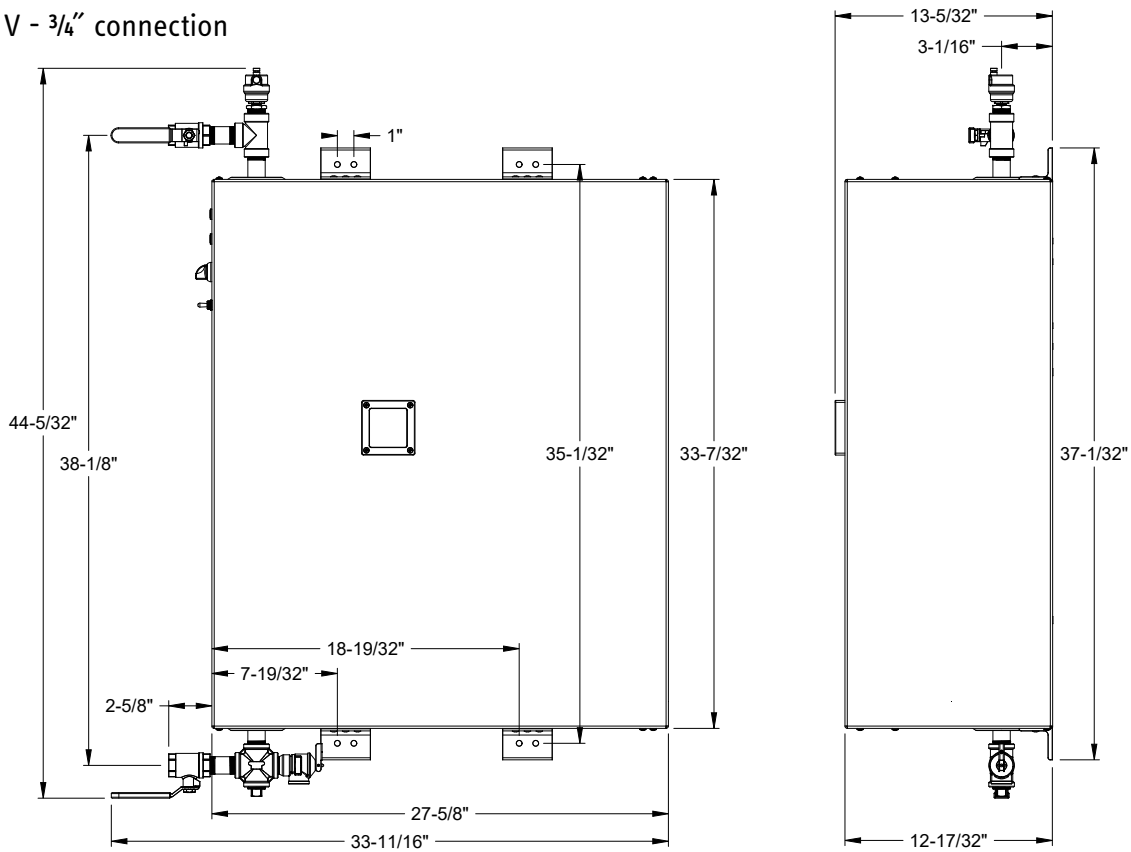


6 years against leakage /
2 years against defects in
workmanship & materials

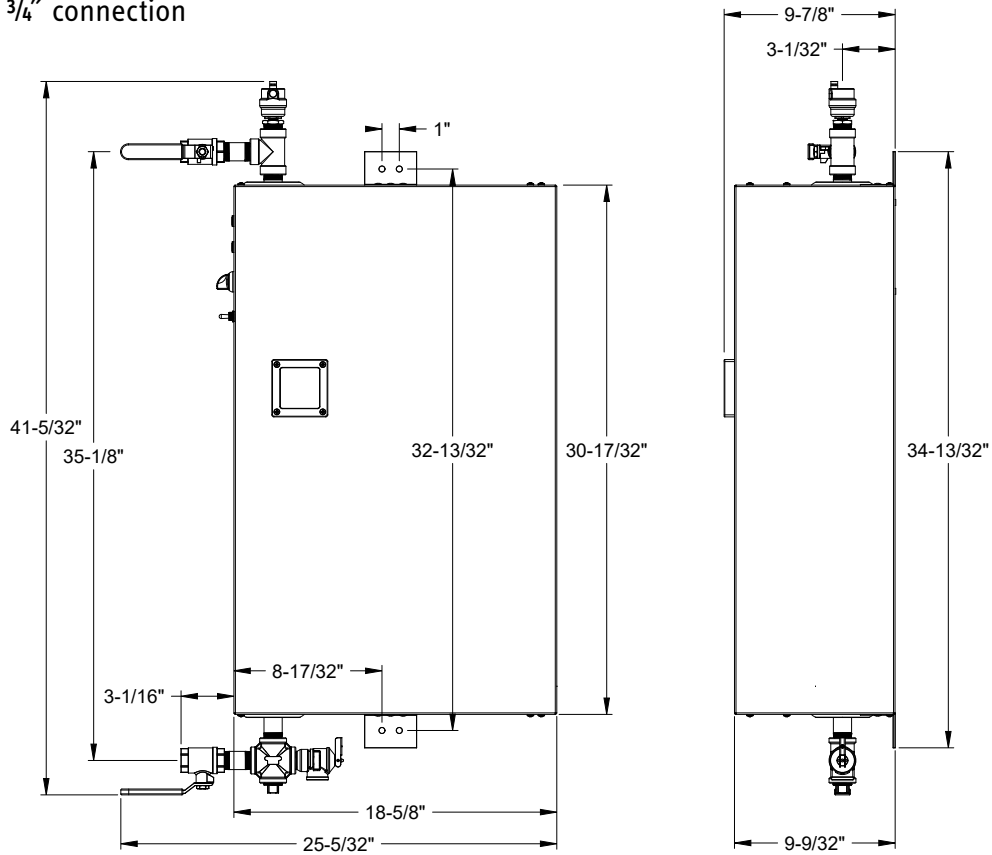
rev. 2.2026 Due to our continuous process of engineering and technological advancement, specifications may change without notice.

Dimensions

208/240 V - 3/4" connection



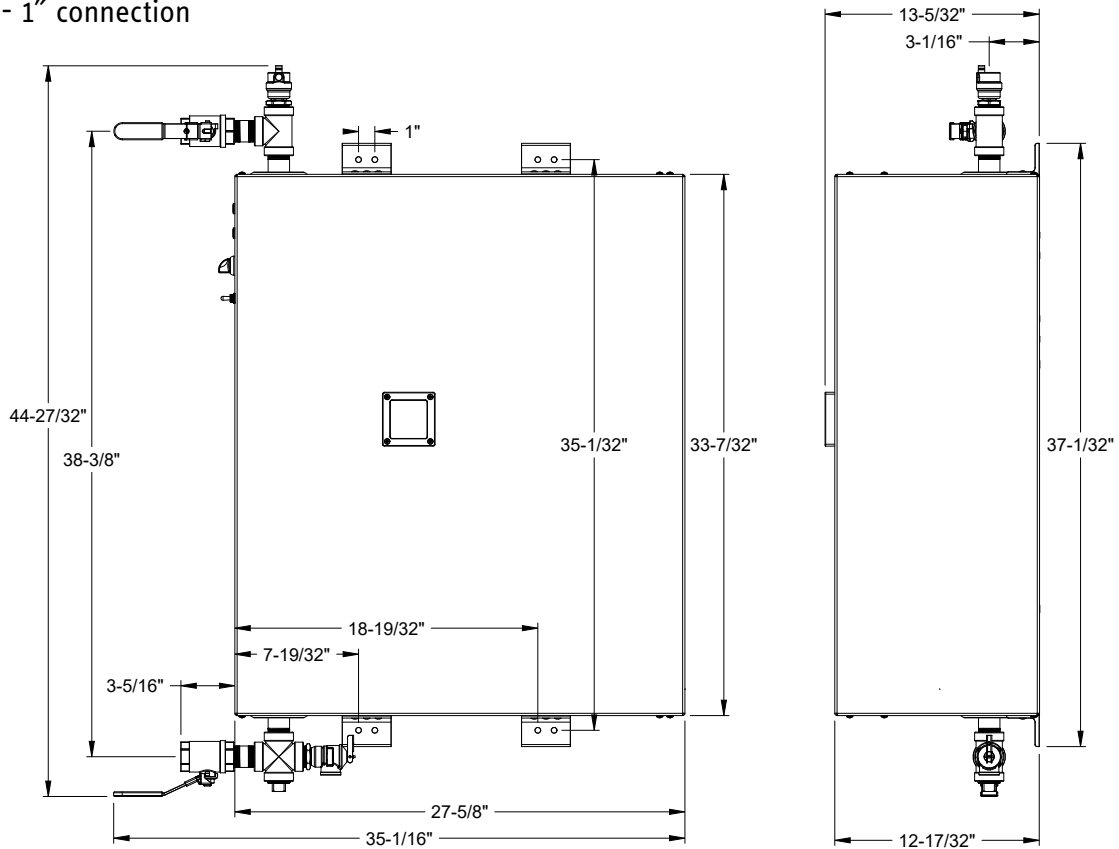
480/575 V - 3/4" connection



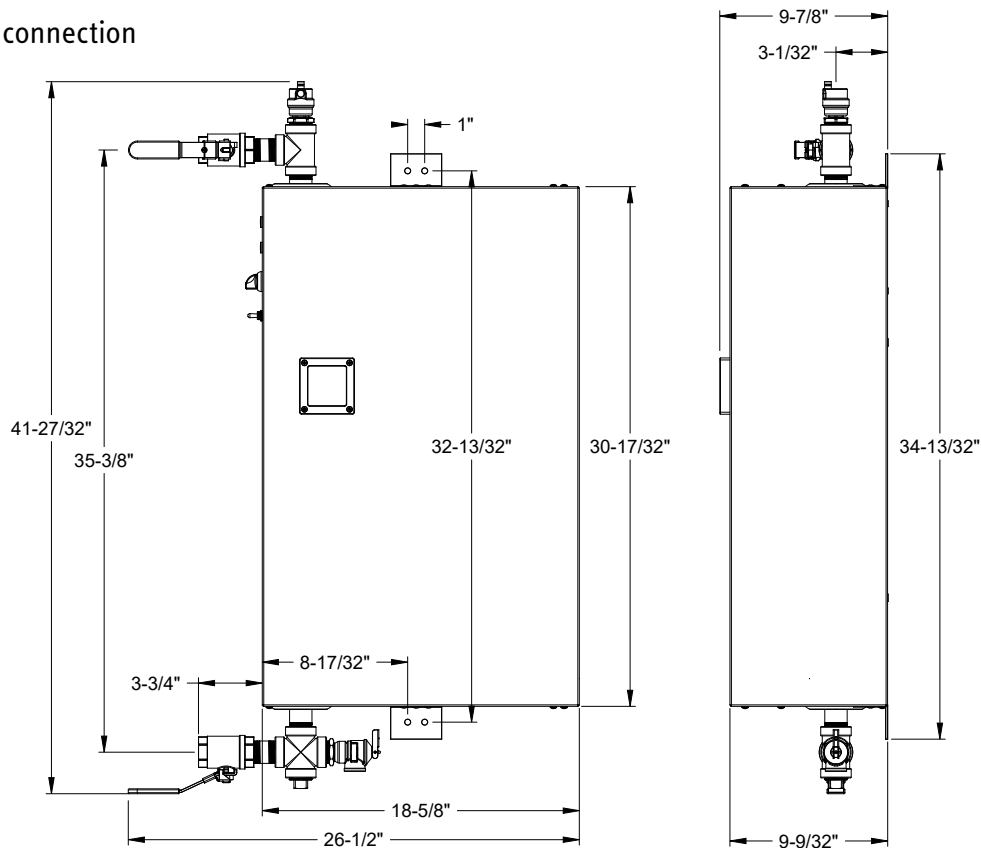
rev. 2.2026 Due to our continuous process of engineering and technological advancement, specifications may change without notice.

STIEBEL ELTRON

208/240 V - 1" connection

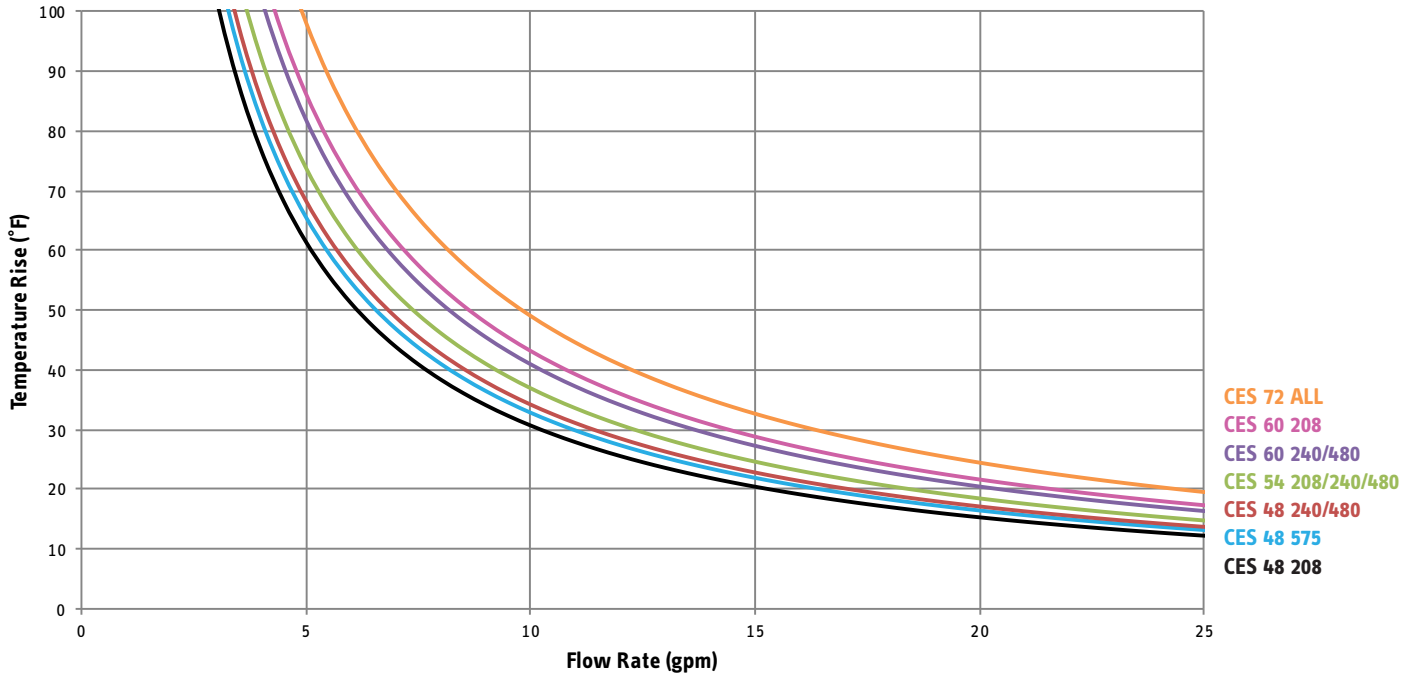


480/575 V - 1" connection

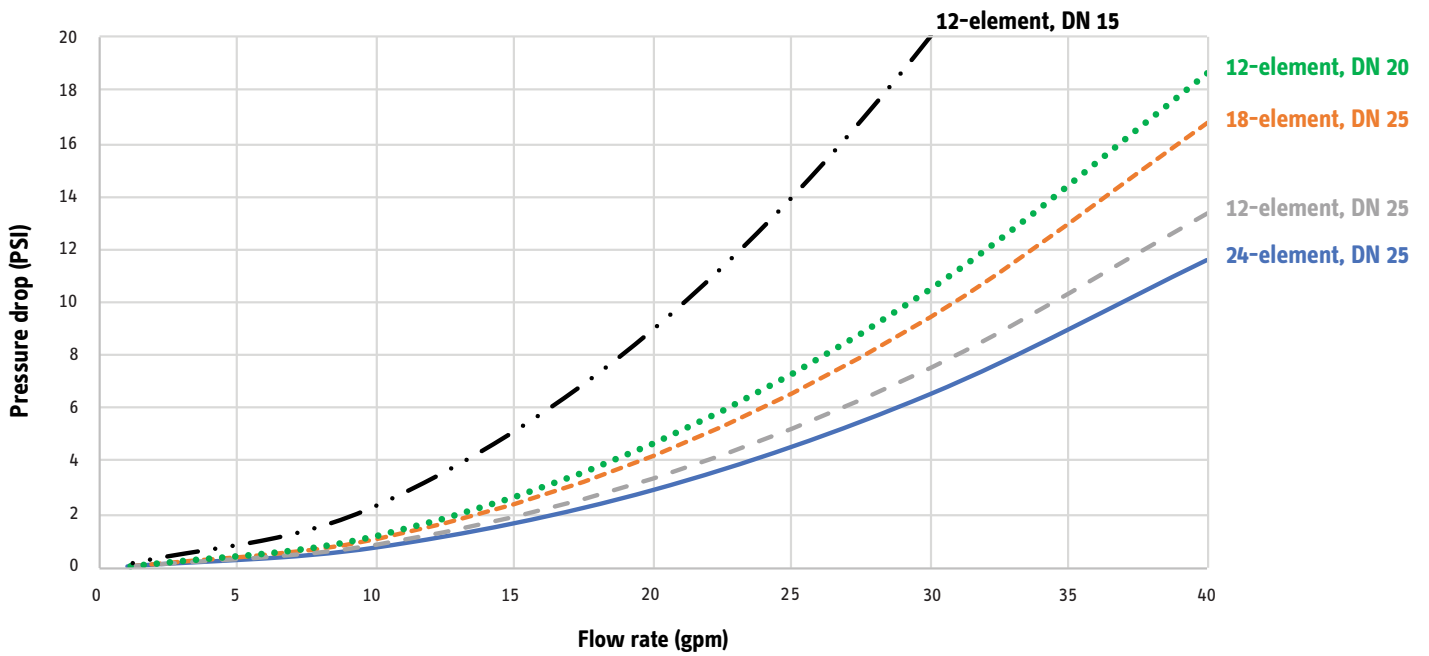


rev. 2.2026 Due to our continuous process of engineering and technological advancement, specifications may change without notice.

Temperature Rise vs. Flow Rate



Pressure Drop vs. Flow Rate



rev. 2.2026 Due to our continuous process of engineering and technological advancement, specifications may change without notice.