

# Slimline® BPW 1020 Bedpan Washer Model Flushometer



## Description

Concealed Royal® Slimline® Bedpan Washer Water Closet Flushometer, for floor mounted or wall hung top spud bowls.

## Flush Cycle

- Model BPW-1020-1.6 Low Consumption (1.6 gpf/6.0 Lpf)
- Model BPW-1020 Water Saver (3.5 gpf/13.2 Lpf)

## Specifications

Quiet, Concealed, Diaphragm Type, Rough Brass Closet Flushometer for either left or right hand supply with the following features:

- Dual Filtered Bypass
- Metal Oscillating Non-Hold-Open Push Button with Triple Seal Handle Packing
- 1" I.P.S. Wheel Handle Bak-Chek® Angle Stop
- Elbow Flush Connection from wall to Vacuum Breaker
- Adjustable Tailpiece
- High Back Pressure Vacuum Breaker Flush Connection
- Chrome Plated Spud Coupling and Flange for 1½" Exposed Top Spud
- Sweat Solder Adapter
- Diaphragm, Handle Packing, Stop Seat and Vacuum Breaker molded from PERMEX® rubber compound for Chloramine resistance

Bedpan Washer Diverter Assembly with the following features:

- Solid One-piece Body Construction
- Solid Brass Spray Arm
- Counter Balanced Pivot Assembly
- Diverter Valve Wall Support

Valve Body, Cover, Tailpiece and Control Stop shall be in conformance with ASTM Alloy Classification for Semi-Red Brass. Valve shall be in compliance to the applicable sections of ASSE 1037 and ANSI/ASME A112.19.2.

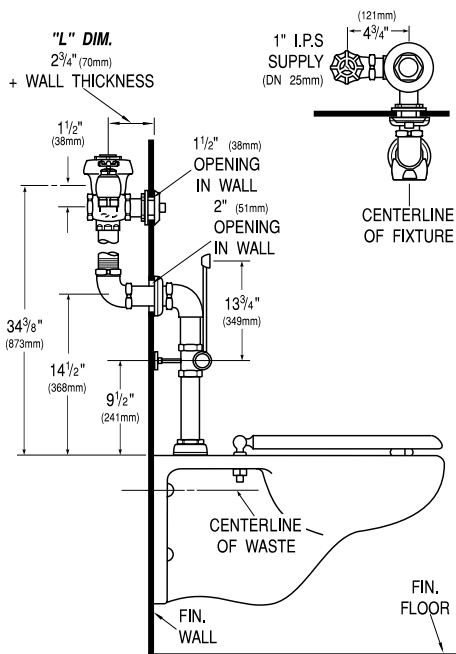
## L Dimension

Specify the "L" Dimension for the proper length of the Push Button Assembly and Flush Connection, equal to the Wall Thickness (to the nearest whole inch) plus 2-3/4".

## Variations

- L-3** 3" Push Button
- YI** Two Wall Bumpers (for open front seat without cover)
- SG** SaniGuard® Antimicrobial Coating Protects Spray Arm\*

\* SaniGuard does not protect users or others against disease-causing bacteria.



This space for Architect/Engineer approval

Job Name \_\_\_\_\_ Date \_\_\_\_\_

Model Specified \_\_\_\_\_ Quantity \_\_\_\_\_

Variations Specified \_\_\_\_\_

Customer/Wholesaler \_\_\_\_\_

Contractor \_\_\_\_\_

Architect \_\_\_\_\_

The information contained in this document is subject to change without notice.