

# MCR-8002-AX\*

## MICRO Plumb® PRODUCTS 8-I/O Control Module

### Description

Eight input/output field-programmable control module to control lavatories, water closets, showers or combination fixtures.

### Specifications

- 24 VAC—50/60 Hz operating voltage
- Operating temperature: 0°C to 85°C
- Input (push button) voltage: 5 VDC
- Output (solenoid) voltage: 24 VAC
- PC Board conformably coated to resist moisture and dust
- RJ-11, 6 position, 4 pin connections for push buttons and solenoids
- Diagnostic LED at each input and output connection
- Potentiometer on PC Board allows for adjustment of run-times or lock-out times depending on program variation
- Serial port for Handheld connection
- Can be installed up to 200 feet away from 24 VAC power supply
- Easy access Reset Button
- Available in five pre-programmed configurations
- Includes mounting hardware

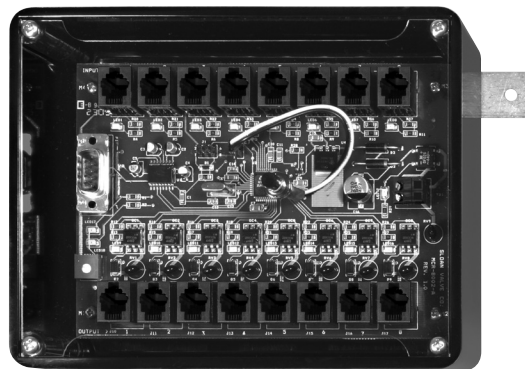
### Program Configurations

- |                               |   |
|-------------------------------|---|
| <input type="checkbox"/> -001 | Pre-tempered Showers with adjustable runtime. Factory set for 3-minute runtime.   |
| <input type="checkbox"/> -003 | Hot/Cold Lavatory and Water Closets. Adjustable lock-out time on Water Closets. Factory set for 1-hour lock-out time.   |
| <input type="checkbox"/> -004 | Water Closets with adjustable lock-out time. Factory set for 1-hour lock-out time.  |
| <input type="checkbox"/> -005 | Combination fixture controls up to two sets of a hot/cold water sink, a Flushometer and a shower. Adjustable default “run time” and “lock-out” times. Factory set for 1-hour lock-out time. |

### Accessories

- PWT Handheld Software.

\*AX=Program number

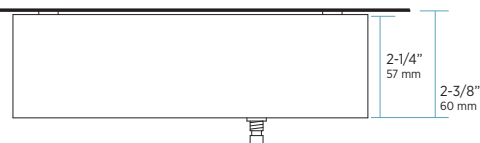


Water Connects Us™

Headquarters • 10500 Seymour Avenue • Franklin Park, IL 60131  
P: 847-671-4300 / 800-9-VALVE-9 • F: 847-671-4380 / 800-447-8329

The information contained in this document is subject to change without notice.

Top View



Front View

