

## CODE NUMBER

3366142

## DESCRIPTION

Sloan® XLERATOR® Sensor-Operated Wall - Surface Hand Dryer  
EHD-501, HEPA110/120V, Sloan® XLERATOR® Sensor-Operated Wall  
- Surface Hand Dryer.

## DETAILS

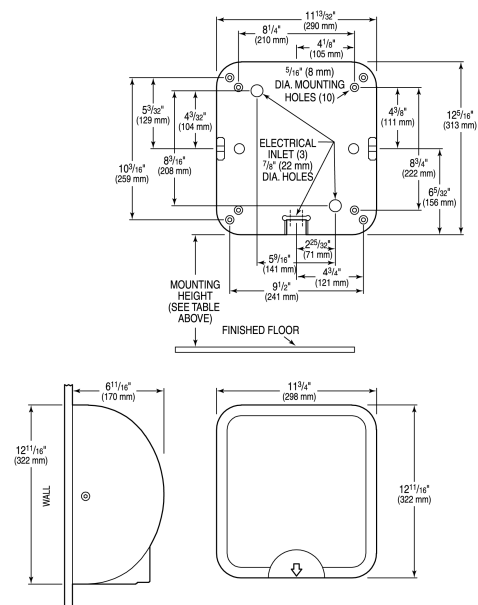
- Finish: Polished White (PW)
- Voltage: 110/120V
- Wattage: 50/60Hz
- Amperage: 11.3-12.2
- Mounting: Wall - Surface
- Power Type: Hardwired
- Depth: 6 86/125" (170mm)
- Height: 12 86/125" (322mm)
- Width: 11 3/4" (298mm)

## FEATURES

- 8 second dry time
- Adjustable speed, sound and heat control
- 95% cost savings vs. paper towels
- Hygienic hand dryer solution
- Adjustable speed, sound and heat control
- Available in Polished White, Matte White, Polished Chrome, Brushed Nickel and Graphite
- Available in multiple finishes/colors
- Virtually maintenance free
- Available with Recess Kit for ADA compliance

## DOWNLOADS

- [Sloan XLERATOR and Sloan XLERATOR Eco Hand Dryer Instructions](#)
- [Additional Downloads](#)



## COMPLIANCES & CERTIFICATIONS



(BAA Compliant, cUL Certified, EPD, HEPA, Proposition 65, UL Certified)

## RECOMMENDED SPECIFICATION

Sloan Xlerator Sensor Operated Hand Dryer. 120V/110V White Finish.

## NOTES

All information contained within this document subject to change without notice.

**Sloan 10500 Seymour Ave, Franklin Park, IL 60131**

Phone: 800.982.5839 • Fax: 800.447.8329 • [sloan.com](http://sloan.com)