

CODE NUMBER

10151311

DESCRIPTION

SU-1015 Urinal and ROYAL 195 ESS Flushometer.

COMPONENTS

- Flushometer: Code 3453202
- Urinal: Code 1101015

DETAILS

- Flush Volume: 0.5 gpf (1.9 Lpf)
- Nominal Dimensions: 14 ¼" x 17 ¼" x 25 ½" (362 x 438 x 648mm)

FLUSHOMETER FEATURES

Quiet, Concealed, Diaphragm Type Assembly, Rough Brass Urinal Flushometer for either

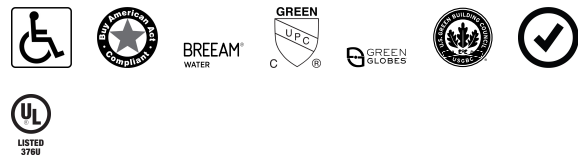
- PERMEX® Synthetic Rubber Diaphragm with Dual Linear Filtered Bypass
- Non-Hold-Open Integral Solenoid Operator, Fixed Metering Bypass and No External Volume Adjustment to Ensure Water Conservation
- OPTIMA® EL-1500 Self-Adaptive Infrared Sensor with Indicator Light
- Stop Seat and Vacuum Breaker molded from PERMEX® Rubber Compound for Chloramine Resistance
- High Back Pressure Vacuum Breaker Flush Connection and Spud Coupling for 3/4" Concealed Rear Spud
- 3/4" I.P.S. Wheel Handle Bak-Chek® Angle Stop

FIXTURE FEATURES

- Washdown Urinal shall be made of vitreous china with a 3/4" rear spud. Urinal shall be wall mounted. Urinal shall include a removable strainer, inlet spud and hanger. Urinal shall use 0.5 gpf / 1.9 Lpf. Urinal shall be Sloan Model SU-1015-0.5.
- White Vitreous China
- Wall mounted
- Washdown flushing action
- 3/4" rear spud inlet
- 100% factory flush tested
- Integral flushing rim
- All mounting hardware included
- Carrier not included



COMPLIANCES & CERTIFICATIONS



(ADA Compliant, BAA Compliant, BREEAM Water Credit, cUPC Green Certified, Green Globes Water Credit, LEED V4 Water Efficiency Credit, Satisfies LEED Credits, UL Certified)

DOWNLOADS

- [Standard Spud Urinal Installation Instructions](#)
- [Sloan Concealed Installation Instructions](#)
- [SS/ST/SU/WETS/WEUS Fixtures Repair and Maintenance Guide](#)
- [Additional Downloads](#)

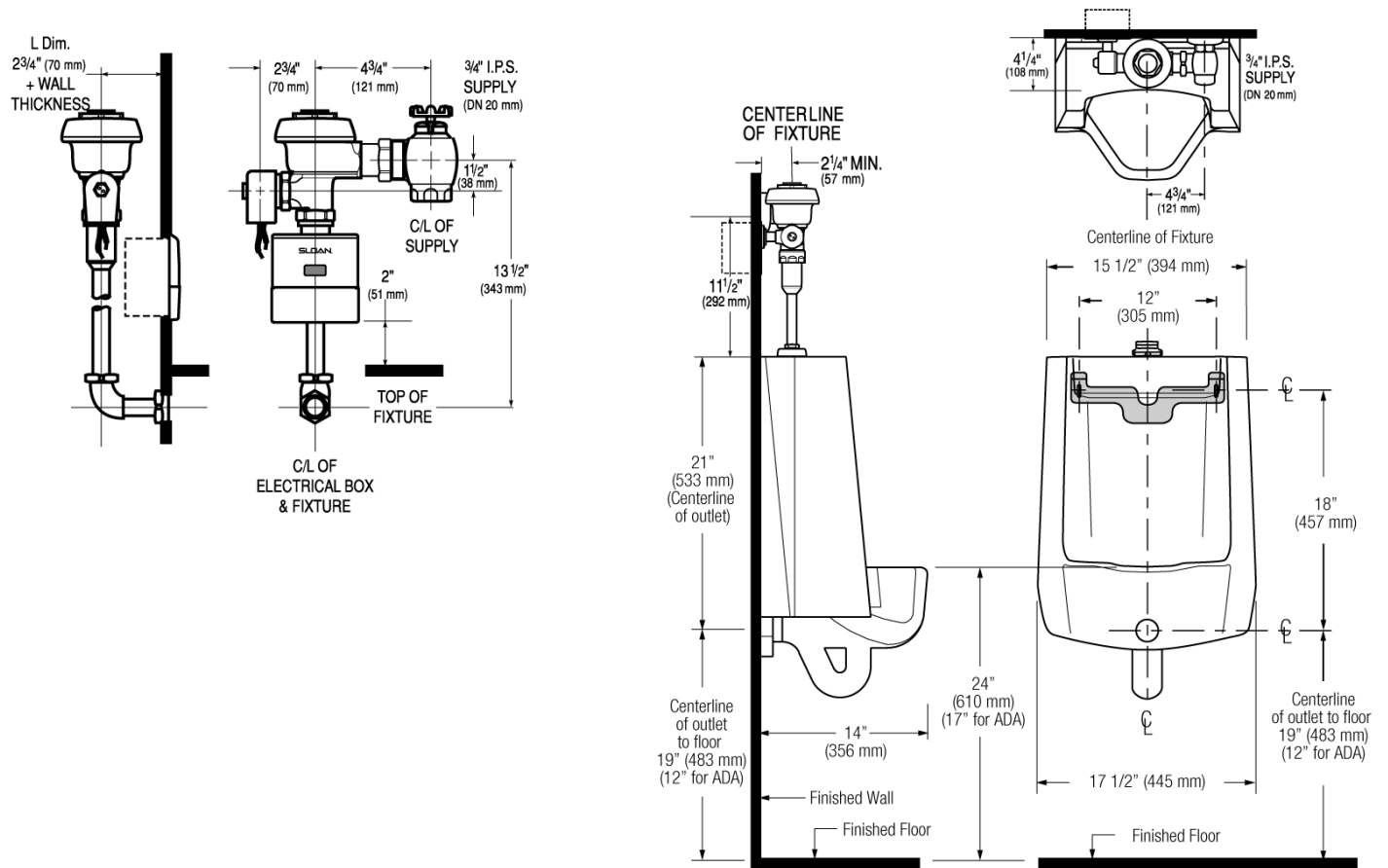
NOTES

All information contained within this document subject to change without notice.

Sloan 10500 Seymour Ave, Franklin Park, IL 60131

Phone: 800.982.5839 • Fax: 800.447.8329 • sloan.com

ROUGH-IN



Sloan 10500 Seymour Ave, Franklin Park, IL 60131
Phone: 800.982.5839 • Fax: 800.447.8329 • sloan.com