

Model
WEUS-1006.1414-0.1 SFSM
OPTIMA Plus® Systems Sensor Activated HEU Flushometer and HEU Urinal Fixture

DESCRIPTION

Complete HEU system with exposed, battery powered, sensor activated, Sloan® OPTIMA Plus® SFSM urinal Flushometer and vitreous china urinal fixture.

Flush Cycle

Model WEUS 1006.1414-0.1 SFSM (0.1 gpf/ 3.8 Lpf)

Code: 10061414

SPECIFICATIONS



Meets the American Disabilities Guidelines and ANSI A117.1 requirements when installed according to these requirements.

NOTE: Plumbing System Requirements

✓ Minimum **Flowing** Pressure: 25 PSI

✓ Maximum Fixture Static Pressure: 80 PSI

Quiet, exposed, diaphragm type, chrome plated urinal Flushometer and vitreous china urinal with the following features:

Flushometer

- High Chloramine Resistant PERMEX® Synthetic Rubber Diaphragm with Linear Filtered Bypass and Vortex Cleansing Action
- ADA compliant metal oscillating Non-Hold-Open Handle with Triple Seal Handle Packing
- ¾" I.P.S. Screwdriver Bak-Chek® Angle Stop
- High Back Pressure Vacuum Breaker Flush Connection with One-piece Bottom Hex Coupling Nut
- Spud Coupling and Flange for ¾" Top Spud
- Sweat Solder Adapter w/Cover Tube and Cast Wall Flange w/Set Screw
- High copper, low zinc brass castings for dezincification resistance
- Non-Hold-Open Handle, Fixed Metering Bypass and no external volume adjustment to ensure water conservation
- Flush accuracy controlled by CID® technology
- Diaphragm, Handle Packing, Stop Seat and Vacuum Breaker molded from PERMEX® rubber compound for chloramine resistance
- Valve Body, Cover, Tailpiece and Control Stop shall be in conformance with ASTM Alloy Classification for Semi-Red Brass. Valve shall be in compliance to the applicable sections of ASSE 1037/ ASME A112.19.2/CSA B45.1

OPTIMA Plus® SFSM Unit

- ADA compliant OPTIMA Plus® SFSM® battery powered infrared sensor for automatic "Hands-free" operation
- Sensor with automatic range adjustment
- Chrome plated metal sensor housing
- Mechanical Manual Override Flush Handle
- Four (4) size C batteries included
- "Low Battery" flashing LED
- "User in View" flashing LED
- 25 to 80 psi operating range
- Vandal resistant strainer assembly included

SPECIFICATIONS (CONTINUED)



Fixture

- Wall hung vitreous china
- Washdown flushing action
- ¾" I.P.S. top spud inlet
- 2" NPT outlet flange
- All mounting hardware included
- Integral flushing rim
- 100 % factory flush tested
- Compliant to the applicable sections of ASME A112.19.2/CSA B45.1
- Carrier not included

FEATURES

Automatic

Sloan SFSM® equipped Flushometers provide the ultimate in sanitary protection and automatic operation. There is no need for AC hookups or wall alterations. The Flushometer operates by means of a battery powered infrared sensor. True mechanical manual over-ride button enables the Flushometer to work in the event of a power failure. State-of-the-art technology enables activation of a manual override without "double flushing" occurring as the user departs (locks out sensor for approximately 10 seconds).

Smart Sense Technology™

Sloan® SFSM Flushometers are equipped with Smart Sense Technology™ which applies extended range and logic techniques to significantly reduce water usage in high use urinal applications; such as when a continuous line of people, also known as a queue, forms. In fact, during a continuous queue, regardless of the number of users, the maximum amount of water used is only 2.0 gallons (186-0.5). Please contact Sloan for specific details.

Hygienic

The Sloan® OPTIMA® SFSM Flushometer System is the next advancement in hygiene. User makes no physical contact with the Flushometer surface except to initiate the Mechanical Manual Override Flush Handle when required. Helps control the spread of infectious diseases.

Economical

Sloan installed batteries speed installation and provide years of metered flushing to control the use of water and energy. Batteries can be changed without turning off the water.

Warranty

3 year (limited)

This space for Architect/Engineer approval

Job Name	Date
Model Specified	Quantity
Variations Specified	
Customer/Wholesaler	
Contractor	
Architect	

The information contained in this document is subject to change without notice.

SLOAN

Sloan Valve Company
10500 Seymour Avenue
Franklin Park, IL 60131
Phone: 1-800-9-VALVE-9 (982-5839)
or 1-847-671-4300
Fax: 1-800-447-8329 or 1-847-671-4380
www.sloanvalve.com

Copyright © 2013 Sloan Valve Company
WEUS-1006.1414 11-13

DESCRIPTION

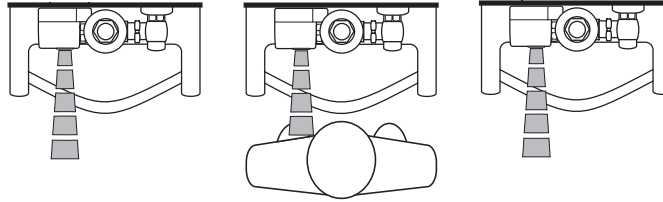
Complete HEU system with exposed, battery powered, sensor activated, Sloan® OPTIMA Plus® SFSM urinal Flushometer and vitreous china urinal fixture.

Flush Cycle

Model WEUS 1006.1414-0.1 SFSM (0.1 gpf/ 3.8 Lpf)

Code: 10061414

OPERATION



ELECTRICAL SPECIFICATIONS

- **Control Circuit**
6 VDC input, 8 second arming delay, 72 hour Sentinel Flush
- **SFSM Sensor Range**
Nominal 8"-54" (203 mm-1372 mm) factory set at 24" (610 mm)
- **SFSM Sensor Type**
Active infrared with automatic adjustment
- **Battery Type**
(4) Size C Alkaline
- **Battery Life**
3 Years @ 3000 flushes/month
- **Indicator Lights**
User in view/low battery
- **Valve Operating Pressure (Flowing)**
25 – 80 psi (172-552 kPa)

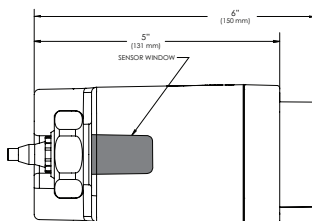
1. A continuous, invisible light beam is emitted from the SFSM unit's Infrared Sensor.

2. When the user enters the sensor's effective range, the Red LED light in the sensor window flashes for eight seconds. After eight seconds of sensing the user, the light will stop flashing and the unit waits for the user to step away before initiating a flush cycle.

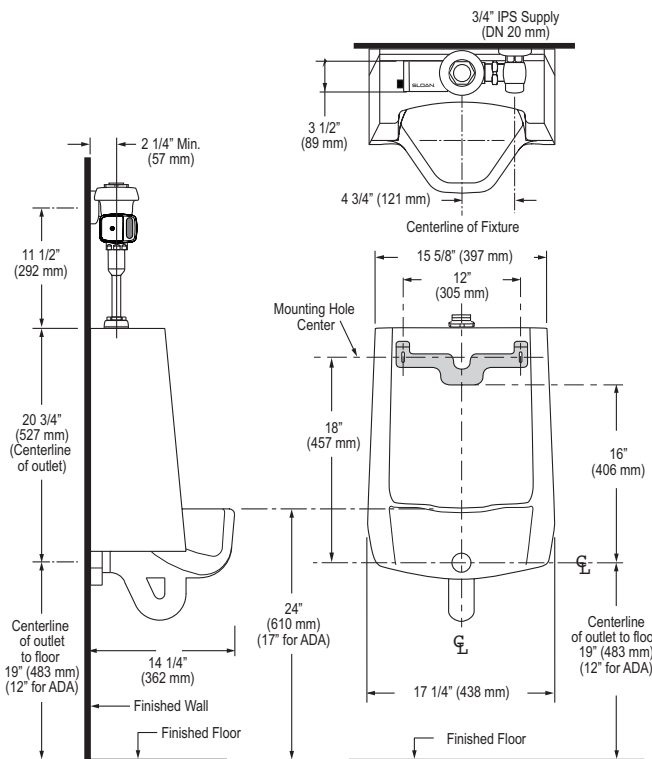
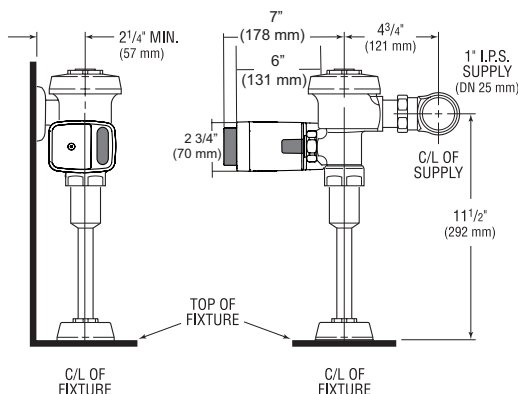
3. When the user steps away, the unit initiates a flush cycle. The unit then automatically resets and is ready for the next user.

NOTE: All vitreous china dimensions shown in these drawings are nominal. Dimensions can vary with the tolerances established in the governing ASME A112.19.2/CSA B45.1 standard. Please take this into consideration when planning rough-in and plumbing layouts.

SFSM DIMENSIONS



DIMENSIONS



SLOAN VALVE COMPANY • 10500 SEYMOUR AVENUE • FRANKLIN PARK, IL 60131

Phone: 1-800-9-VALVE-9 or 1-847-671-4300 • Fax: 1-800-447-8329 or 1-847-671-4380 • www.sloanvalve.com