



model **SP155**  
Thermostat

## FEATURES & BENEFITS

---

## OPTIONS

---

For more information, visit [www.hawSCO.com](http://www.hawSCO.com) or call (888) 640-4297.



## SPECIFICATIONS

---

Model SP155 is a thermostat for the heat traced cable outdoor Models 8317CTFP and 8317CTFP.220V. It has hermetically sealed contacts. Opens (rising) at 62° F (17° C) and closes (falling) at 52° F (11° C).

## APPLICATIONS

---

## MODEL SP155 THERMOSTAT REPLACEMENT FOR MODELS 8317CTFP & 8317CTFP.220V

REFER TO FIGURES SHOWN BELOW TO DETERMINE WHICH THERMOSTAT STYLE IS CURRENTLY INSTALLED ON YOUR UNIT.  
FOLLOW INSTRUCTIONS ACCOMPANYING EACH FIGURE.

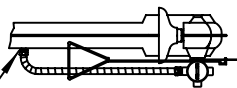


FIGURE 1  
THERMO

REPLACEMENT INSTRUCTIONS:

- 1) REMOVE JUNCTION BOX ACCESS COVER.
- 2) DISCONNECT THERMOSTAT LEADS FROM TERMINAL BLOCK.
- 3) REMOVE FLEX CONDUIT AND CONNECTOR FROM JUNCTION BOX.
- 4) REMOVE FLEX CONDUIT AND CONNECTOR FROM THERMOSTAT.
- 5) CUT THERMOSTAT LEADS AT THERMOSTAT AND DISCARD.
- 6) PLUG JUNCTION BOX HUB, AND THERMOSTAT USING CONDUIT PLUGS.
- 7) INSTALL NEW THERMOSTAT PER NOTES 4-6, FIGURE 3.

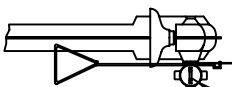
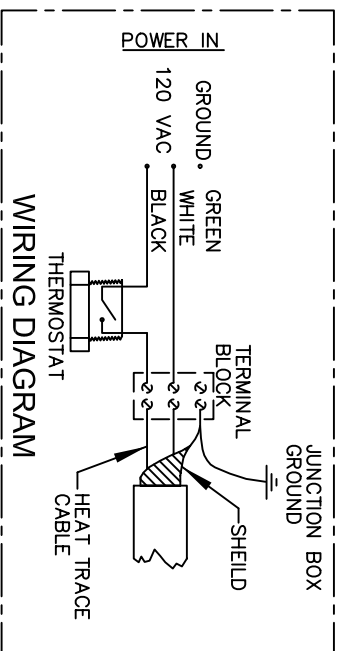


FIGURE 3  
THERMO INSIDE

REPLACEMENT INSTRUCTIONS:

- 1) REMOVE JUNCTION BOX ACCESS COVER.
- 2) DISCONNECT THERMOSTAT LEADS FROM TERMINAL BLOCK.
- 3) UNTHREAD THERMOSTAT FROM MOUNTING PAD.
- 4) THREAD NEW THERMOSTAT ONTO MOUNTING PAD LOCATED INSIDE JUNCTION BOX.
- 5) CONNECT THERMOSTAT LEADS TO TERMINAL BLOCK (SEE WIRING DIAGRAM).
- 6) REPLACE ACCESS COVER.



THERMO INSIDE

REPLACEMENT INSTRUCTIONS:

- 1) REMOVE JUNCTION BOX ACCESS COVER.
- 2) DISCONNECT THERMOSTAT LEADS FROM TERMINAL BLOCK.
- 3) CUT THERMOSTAT LEADS AT THERMOSTAT AND DISCARD.
- 4) INSTALL NEW THERMOSTAT PER NOTES 4-6, FIGURE 3.

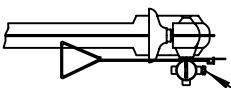


FIGURE 2  
THERMO INSIDE

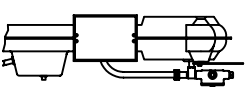
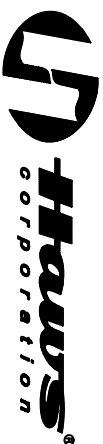


FIGURE 4  
THERMO INSIDE

REPLACEMENT INSTRUCTIONS:

- 1) REMOVE JUNCTION BOX ACCESS COVER.
- 2) DISCONNECT THERMOSTAT LEADS FROM TERMINAL BLOCK.
- 3) UNTHREAD THERMOSTAT FROM MOUNTING PAD.
- 4) THREAD NEW THERMOSTAT ONTO MOUNTING PAD LOCATED INSIDE JUNCTION BOX.
- 5) CONNECT THERMOSTAT LEADS TO TERMINAL BLOCK (SEE WIRING DIAGRAM).
- 6) REPLACE ACCESS COVER.

MODEL SP155 THERMOSTAT:  
1) HAS HERMETICALLY SEALED CONTACTS.  
2) OPENS (RISING) AT 62°F  
3) CLOSES (FALLING) AT 52°F



1455 KLEPPE LANE  
SPARKS, NEVADA 89431  
(775) 359-4712 FAX (775) 359-7424  
E-MAIL: HAWS@HAWS.CO.COM  
WEBSITE: WWW.HAWS.CO.COM

EQ/NO:	TERMINAL BLOCK	FOR:	MODEL(S):
DATE:	ECON. 4381	REV.:	SP155
APPROVED:	2/2/2011	CHG.:	INFO FAX DOC #:
			277155
SIZE:	A	INSTALLATION:	BACK
REV.:	00200320		
	09955C00		
	2		