

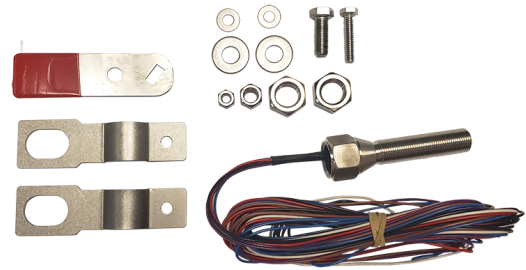
FEATURES & BENEFITS

ALTERNATIVE

Mounting the proximity switch to the ball valve is an alternative to using a flow switch plumbed in to the water supply.

OPTIONS

For more information, visit www.hawesco.com or call (888) 640-4297.



SPECIFICATIONS





The Haws SP152D is a double pole proximity switch designed to mount to a Haws emergency shower or eyewash. Mounted to the ball valve, this switch sends an electrical signal to an alarm and control board when the emergency fixture is activated. This switch kit includes the electrical sensor, magnet and mounting hardware.

APPLICATIONS

Specifically, this proximity switch can be used for most Haws emergency eyewashes or drench showers (not meant for freeze resistant models).

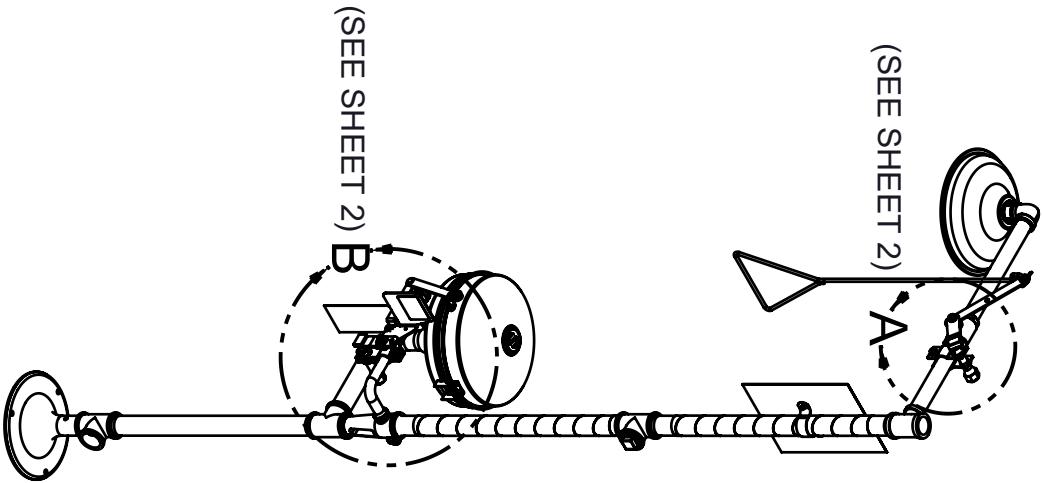
NOTES:

1. APPLY SMALL AMOUNT OF THREAD LOCKER (LOCTITE #222MS - SUPPLIED) TO MALE THREADS, WHERE INDICATED.
2. APPLY SMALL AMOUNT OF LUBRICANT (DOW CORNING #111 - SUPPLIED) TO PROXIMITY SWITCH (ITEM 1) THREADS, PRIOR TO INSTALLATION (PREVENTS THREAD SEIZING).
3. THESE PROXIMITY SWITCHES ARE CSA CERTIFIED AS ACCESSORIES FOR USE IN HAWS MANUFACTURED ASSEMBLIES.



4. PROXIMITY SWITCH INSTALLATION LOCATIONS:
 - SINGLE PROXIMITY SWITCH MODELS SP152S AND SP152D
 - CAN BE INSTALLED AT EITHER:
 - A) A SHOWER HEAD ONLY (SEE SHEET 2 OF 5, DETAIL A), OR
 - B) AN EYE/FACE WASH ONLY (SEE SHEET 2 OF 5, DETAIL B AND SHEET 3 OF 5)
 - DOUBLE PROXIMITY SWITCH MODELS SP152SC AND SP152DC
 - CAN BE INSTALLED AT:
 - A) BOTH A SHOWER HEAD AND EYE/FACE WASH ON COMBINATION
 - SAFETY SHOWER UNITS (SEE SHEET 2 OF 5, DETAILS A AND B AND SHEET 3 OF 5).
5. PROXIMITY SWITCH KIT BRACKETS WILL FIT 1/2" - 1" IPS PIPE SIZES. SEE HAWS MODEL COMPATIBILITY TABLE ON PAGE 3 OF HAWS SP152 SERIES OPERATION AND MAINTENANCE MANUAL, FOR MODELS THAT THESE KITS WILL FIT ON.

PARTS BREAKDOWN					
MODEL NUMBER		SP152S	SP152D	SP152SC	SP152DC
ITEM NO.	DESCRIPTION	QTY.	QTY.	QTY.	QTY.
1	PROXIMITY SWITCH, SPDT	1	--	2	--
	PROXIMTY SWITCH, DPDT	--	1	--	2
2	STRAP, PROXIMITY SWITCH	2	2	4	4
3	WASHER, FLAT, 1/4	2	2	4	4
4	NUT, 1/4-20	1	1	2	2
5	SCREW, 1/4-20 X 1-1/4	1	1	2	2
6	JAM NUT, 5/8-18, PROXIMITY SWITCH	2	2	4	4
7	MAGNET, PROXIMITY SWITCH	1	1	2	2
8	NUT, 3/8-24	1	1	1	1
9	WASHER, FLAT, 3/8	2	2	2	2
10	SCREW, 3/8-24 X 1 W/HOLE	1	1	1	1
N/A	LOCTITE THREAD LOCKER 222MS (0003244389)	1	1	1	1
N/A	DOW CORNING LUBRICANT #111 (0003247000)	1	1	1	1

SEE SHEET 4 OF 5 FOR ELECTRICAL WIRING OF PROXIMITY SWITCH(ES)

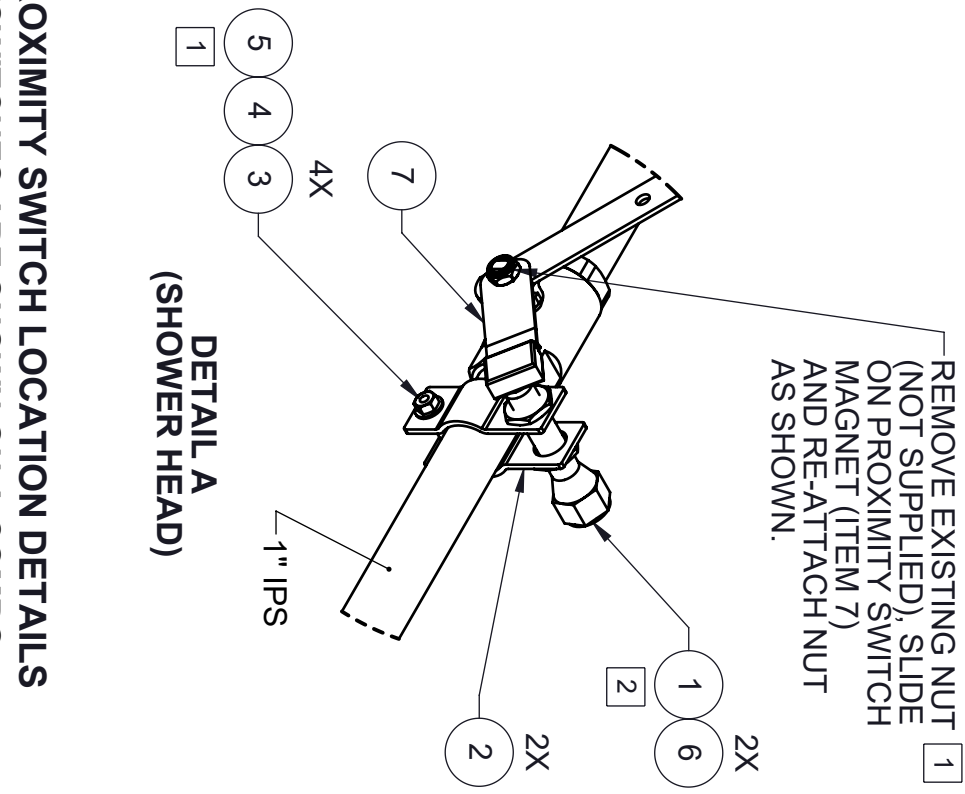
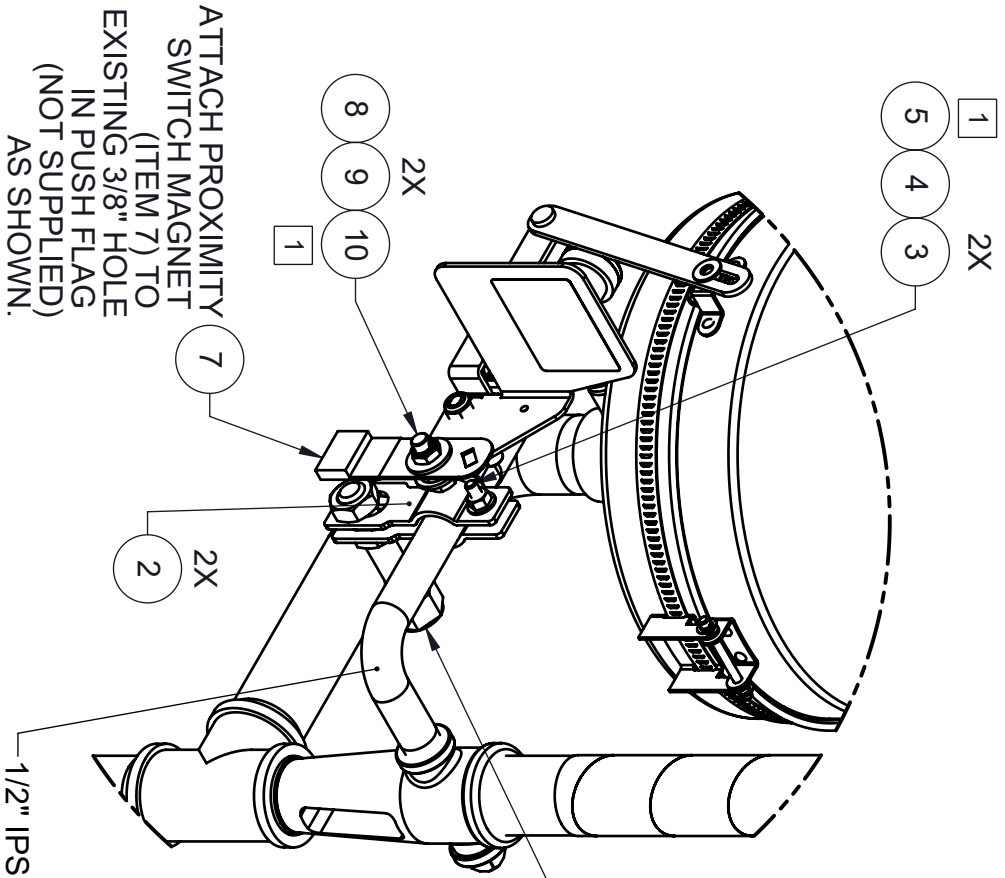


HAWS 8300-8309
SHOWN FOR REFERENCE
(NOT SUPPLIED)



1455 KLEPPE LANE
SPARKS, NEVADA 89431
(775) 359-4712 FAX (775) 359-7424
E-MAIL: HAWS@HAWS.CO.COM
WEBSITE: WWW.HAWS.CO.COM


ENCL. 5551	REV. 5903	BY: F.V.	MODEL(S)	1455 KLEPPE LANE
DRAWN: 07/20/22	DATE: 07/20/22	CHKD: F.V.	SP152S/SP152D/SP152SC/SP152DC/SP155-PS	SPARKS, NEVADA 89431
APPROVED: F.V.	DATE: 08/29/22	SCALE: 1:16	DRAWING TYPE: INSTALLATION	(775) 359-4712 FAX (775) 359-7424
		SIZE: A		E-MAIL: HAWS@HAWS.CO.COM
				WEBSITE: WWW.HAWS.CO.COM
				PART NUMBER 0510001049.D
				REVISION 3
				SHEET 1 OF 5



**DETAIL B
(EYE/FACE WASH)**

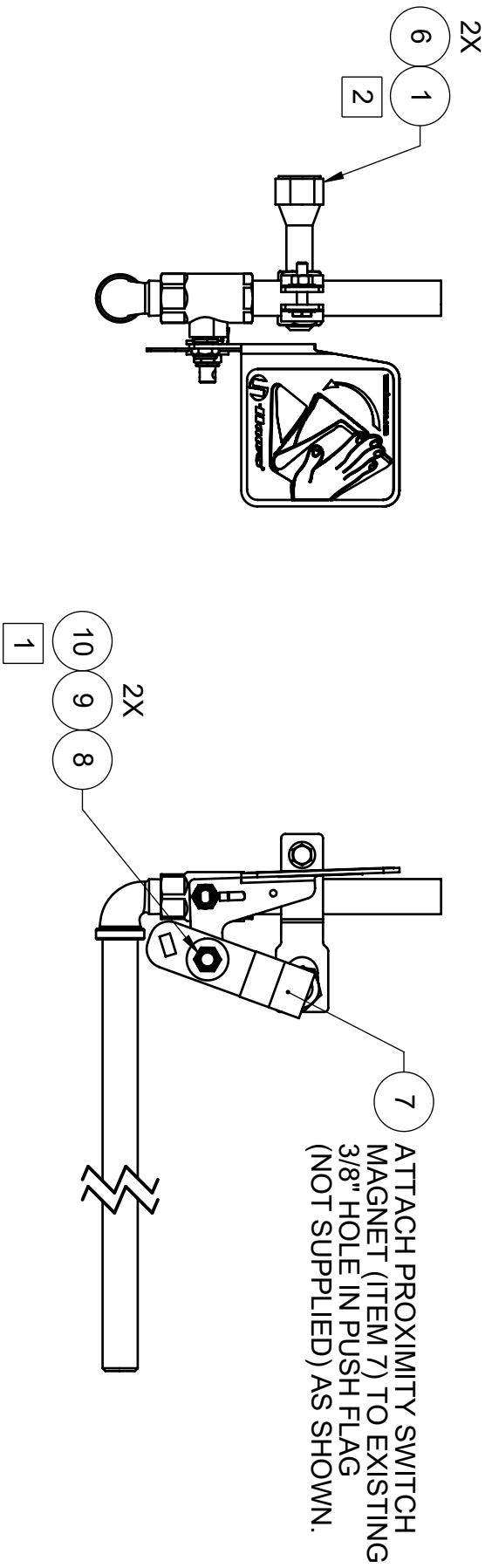
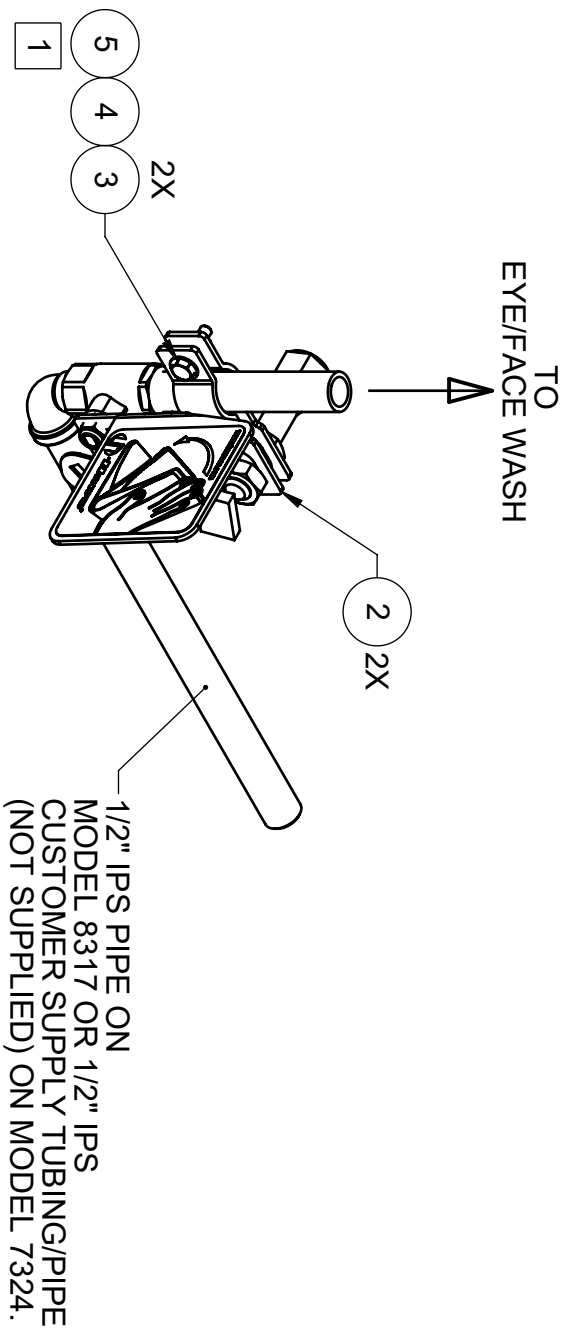
**SEE SHEET 3 OF 5 (PAGE 6) FOR VERTICAL ORIENTATION
OF PROXIMITY SWITCH ON EYE/FACE WASH
FOR MODELS 7324 OR 8317.**

**PROXIMITY SWITCH LOCATION DETAILS
(SWITCHES ARE SHOWN ON A COMBO
SHOWER FOR REFERENCE. CERTAIN
SHOWER/EYEWASH MODELS MAY REQUIRE
THAT THE BRACKETS BE MOUNTED TO
CUSTOMER SUPPLY PIPING)**



1455 KLEPPE LANE
SPARKS, NEVADA 89431
(775) 359-4712 FAX (775) 359-7424
E-MAIL: HAWS@HAWS.CO.COM
WEBSITE: WWW.HAWS.CO.COM

ECN: 5551	REV: 5903	BY: FV	MODEL(S): SP152S/SP152D/SP152SC/SP152DC/SP155-PS	PART NUMBER: 0510001049.D
DRAWN: 11	DATE: 07/25/11	CHKD: KML		REVISION: 3
APPROVED: FV	DATE: 08/29/22	SCALE: 1/20	DRAWING TYPE: INSTALLATION	SHEET 2 OF 5



**VERTICAL ORIENTATION
OF PROXIMITY SWITCH ON EYE/FACE WASH
FOR MODELS 7324 OR 8317 SHOWN.
SEE PREVIOUS SHEET (2 OF 5) FOR ALL OTHER INSTALLATIONS.**



1455 KLEPPE LANE
SPARKS, NEVADA 89431
(775) 359-4712 FAX (775) 359-7424
E-MAIL: HAWS@HAWS.CO.COM
WEBSITE: WWW.HAWS.CO.COM

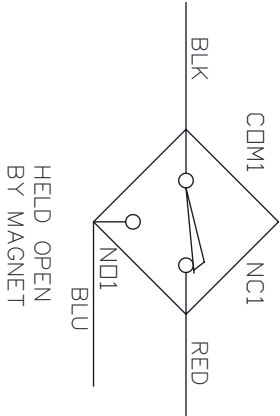
ENCL	REV/ENCL	BY	MODEL(S)
5551	5903	F.V.	SP152S/SP152D/SP152SC/SP152DC/SP155-PS
DRAWN	DATE	CHKD	
F.V.	07/20/15	KMI	
APPROVED	DATE	SCALE	DRAWING TYPE
F.V.	08/29/22	1:4	INSTALLATION
		SIZE	SHEET
		A	3 OF 5
			3

PART NUMBER
0510001049.D

REVISION
3

SP152S

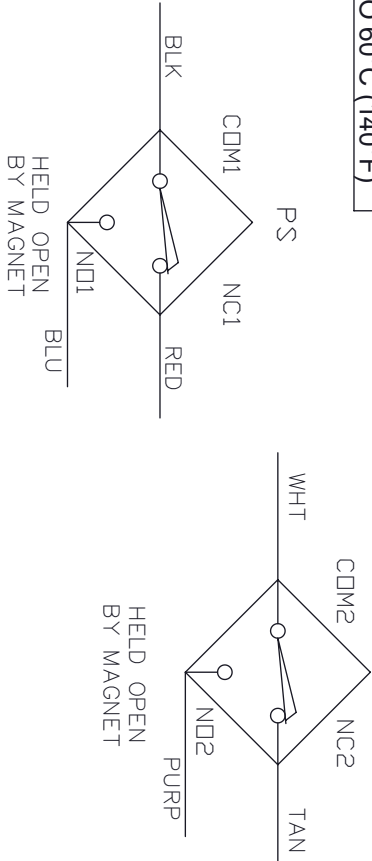
PS



ALL ELECTRICAL WORK TO BE DONE PER LOCAL CODE

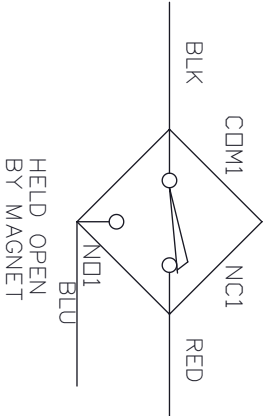
PROXIMITY SWITCHES ARE RATED TO 3 AMPS DC,
VOLTAGE 0-120 VAC or 0-28 VDC, 100VA
AMBIENT TEMPERATURE -40°C (-40°F) TO 60°C (140°F)

SP152D



SP152SC

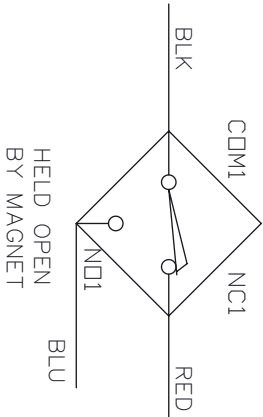
PSSH



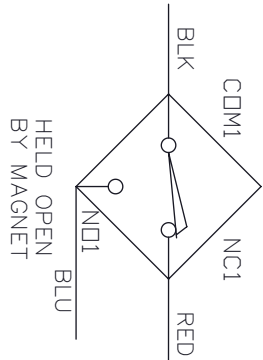
ELECTRICAL WIRING OF
PROXIMITY SWITCH(ES)

SP152DC

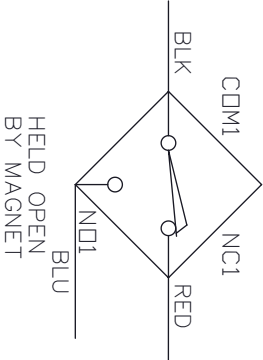
PSSH



PSEW



PSEW



LEGEND:

BLK - BLACK
BLU - BLUE
COM - COMMON
PS - PROXIMITY SWITCH
PSSH - PROXIMITY SWITCH, SHOWER
PSEW - PROXIMITY SWITCH, EYEWASH
PURP - PURPLE
NO - NORMALLY OPEN
NC - NORMALLY CLOSED
WHT - WHITE



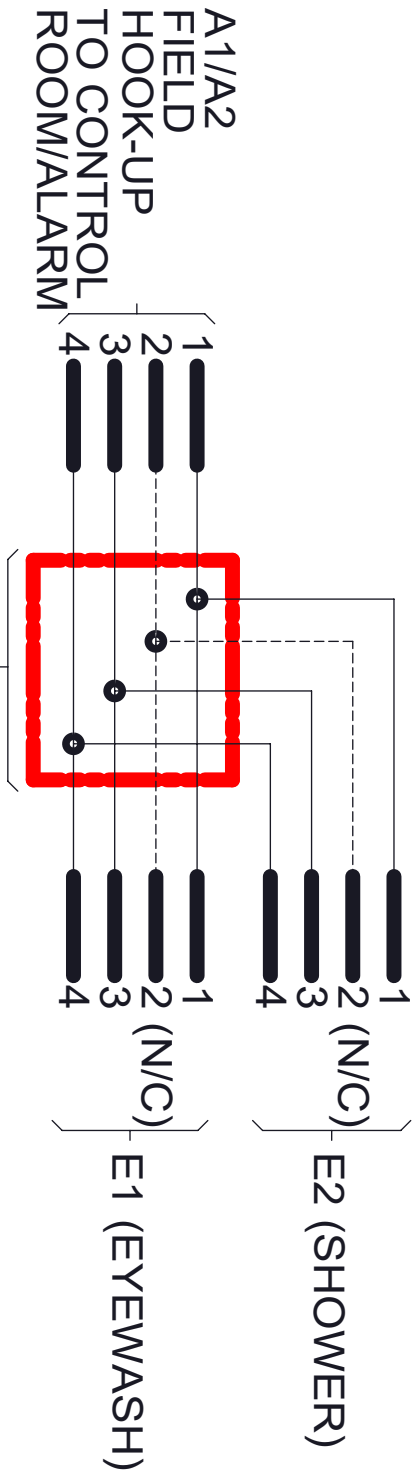
1455 KLEPPE LANE
SPARKS, NEVADA 89431
(775) 359-4712 FAX (775) 359-7424
E-MAIL: HAWS@HAWS.CO.COM
WEBSITE: WWW.HAWS.CO.COM

ENCL	REV	ENCL	BY	MODEL(S)	PART NUMBER
5551	5903	F.V.		SP152S/SP152D/SP152SC/SP152DC/SP155-PS	0510001049.D
DRAWN	DATE	CHK'D			REVISION
F.V.	07/25/03	KML			3
APPROVED	DATE	SCALE	1:12	DRAWING TYPE	SHEET 4 OF 5
F.V.	08/29/22			INSTALLATION	
		SIZE	A		

ALL ELECTRICAL INSTALLED PER LOCAL ELECTRICAL CODES.

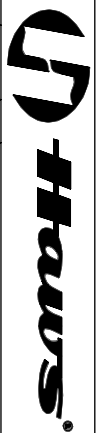
Proximity Switches rated to 3Amps DC, Voltage 0-28VDC or 0-120VAC
100VA. Ambient Temperature -40° C to +60° C.

WIRING DIAGRAM FOR SP155-PS



WIRING:

- 1 IS TAN OUTPUT N.C.
- 2 IS WHITE OUTPUT N/C (NOT CONNECTED)
- 3 IS BLUE OUTPUT N.O.
- 4 IS BLACK OUTPUT COMMON



1455 KLEPPE LANE
SPARKS, NEVADA 89431
(775) 359-4712 FAX (775) 359-7424
E-MAIL: HAWS@HAWS.CO.COM
WEBSITE: WWW.HAWS.CO.COM

ECN:	REV/ECN:	BY:	MODEL(S)	PART NUMBER
5551	5903	F.V.	SP152S/SP152D/SP1525C/SP152DC/SP155-PS	0510001049.D
DRAWN:	DATE:	CHKD:		REVISION
1	07/25/11	KM		3
APPROVED:	DATE:	SCALE:	DRAWING TYPE:	
F.V.	08/29/22	1:12	INSTALLATION	
		SIZE:	A	SHEET 5 OF 5