

□ **GSC2670J** Recessed Safety Center with Drain Pan, Wall Mounted Exposed Shower Head

Application: Recessed safety center with barrier-free eye/face wash and shower safety station, matching fire extinguisher and upper storage housings, wall mounted exposed shower head, and drain pan. Stainless steel cover provides attractive appearance and protects unit when not in use. When activated, cover serves as pan to collect waste water and return it into unit for drainage. The integrated housings create a cohesive aesthetic for all safety equipment requirements in one location.

ADA Compliance: When installed at recommended mounting heights, unit complies with ADA requirements for accessibility by handicapped persons.

Shower Head: 10" diameter stainless steel with 20 GPM flow control. Furnished with horizontal supply pipe and wall escutcheon.

Shower Valve: 1" IPS brass stay-open ball valve with stainless steel "panic bar" actuator.

Cover/Drain Pan: 16 gauge stainless steel combination cover and drain pan. Grasping "panic bar" handle and opening cover pulls spray head assembly down from vertical to horizontal position, activating water flow. While unit is in operation, waste water is collected in drain pan and returned into cabinet for drainage. Unit remains in operation until cover is returned to closed position.

Eye/Face Wash Spray Head Assembly: Two FS-Plus™ spray heads mounted on supply arms. Each spray head has individually adjustable flow control and filter to remove impurities from water flow.

Eye/Face Wash Valve: 1/2" IPS brass plug-type valve with O-ring seals. Furnished with in-line strainer to protect valve from debris and foreign matter.

Mounting: Unit is comprised of (3) modular 16 gauge stainless steel cabinets. Each cabinet flange features 3/8" return for recessed mounting in wall.

Supply: 1" NPT female inlet.

Waste: 2" NPT female outlet.

Sign: ANSI-compliant identification sign.

U.S. Patent 5,768,721

Available Options

□ **AP250-065** Modesty curtain for wall mounting.

□ **AP280-235** Electric strobe light and alarm horn unit for recess mounting in finished wall. Light illuminates and horn sounds when eye/face wash or shower is activated. Includes additional leads for remote monitoring.



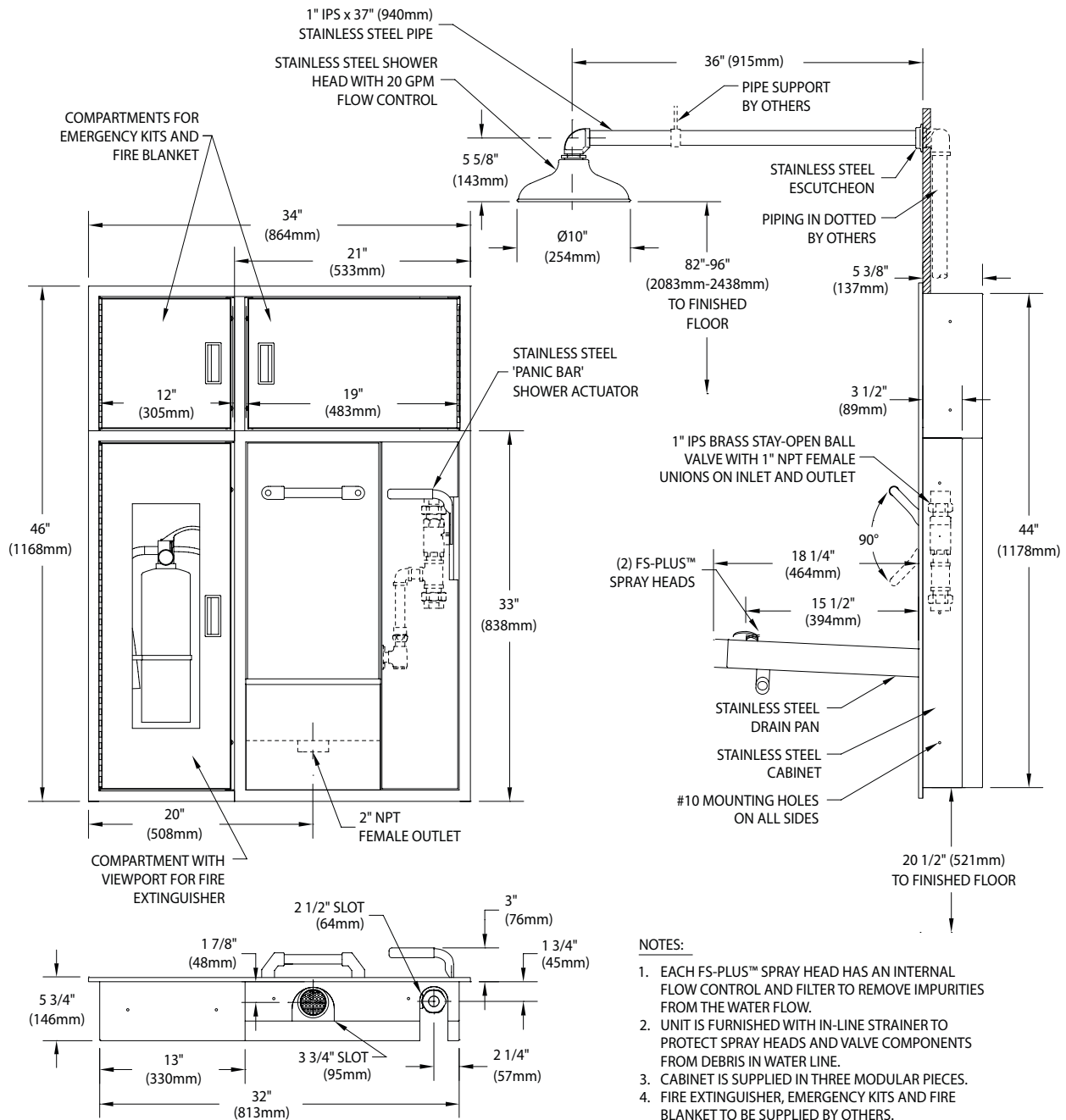
Note: Shown with optional AP280-237 electric light and alarm horn unit with silencing switch. (Fire extinguisher sold separately)

□ **AP280-237** Electric strobe light and alarm horn unit with silencing switch for recess mounting in finished wall. Light illuminates and horn sounds when eye/face wash or shower is activated. Silencing switch can silence alarm horn during unit activation. Includes additional leads for remote monitoring.

□ **G3800LF** Thermostatic mixing valve precisely blends hot and cold water to deliver tepid water as required by ANSI Z358.1-2014. Refer to "Tempering Valves" section for complete technical and product selection information.



□ GSC2670J Recessed Safety Center with Drain Pan, Wall Mounted Exposed Shower Head



NOTES:

1. EACH FS-PLUS™ SPRAY HEAD HAS AN INTERNAL FLOW CONTROL AND FILTER TO REMOVE IMPURITIES FROM THE WATER FLOW.
2. UNIT IS FURNISHED WITH IN-LINE STRAINER TO PROTECT SPRAY HEADS AND VALVE COMPONENTS FROM DEBRIS IN WATER LINE.
3. CABINET IS SUPPLIED IN THREE MODULAR PIECES.
4. FIRE EXTINGUISHER, EMERGENCY KITS AND FIRE BLANKET TO BE SUPPLIED BY OTHERS.

THIS SPACE FOR ARCHITECT/ENGINEER APPROVAL

Sign Included



Due to continuing product improvement, the information contained in this document is subject to change without notice. All dimensions are $\pm 1/4"$ (6mm). rev. 0118

Guardian Equipment
1140 N North Branch St
Chicago, IL 60642

312 447 8100 TELEPHONE
312 447 8101 FACSIMILE
gesafety.com



Listed 8116. Units have been tested to and comply with ANSI Z358.1-2014 and the Uniform Plumbing Code.

