

### GBF2162 Recessed Safety Station with Drain Pan and Daylight Drain, Recess Mounted Shower Head

**Application:** Recessed barrier-free eye/face wash and shower safety station with ceiling mounted recessed shower head and drain pan. Stainless steel cover provides attractive appearance and protects unit when not in use. When activated, cover serves as pan to collect waste water and return it into unit for drainage. Rather than connecting to building drainage system, unit has 1" IPS stainless steel drain on front of unit for waste water. Front drain provides for less costly installation while facilitating regular testing of unit.

**ADA Compliance:** When installed at recommended mounting heights, unit complies with ADA requirements for accessibility by handicapped persons.

**Shower Head:** 11-3/4" diameter stainless steel with 20 GPM flow control and flange for flush mounting in ceiling.

**Shower Valve:** 1" IPS brass stay-open ball valve with stainless steel "panic bar" actuator.

**Cover/Drain Pan:** 16 gauge stainless steel combination cover and drain pan. Grasping "panic bar" handle and opening cover pulls spray head assembly down from vertical to horizontal position, activating water flow. While unit is in operation, waste water is collected in drain pan and re-directed to daylight drain for drainage out the front of unit. Unit remains in operation until cover is returned to closed position.

**Eye/Face Wash Spray Head Assembly:** Two FS-Plus™ spray heads mounted on supply arms. Each spray head has individually adjustable flow control and filter to remove impurities from water flow.

**Eye/Face Wash Valve:** 1/2" IPS brass plug-type valve with O-ring seals. Furnished with in-line strainer to protect valve from debris and foreign matter.

**Mounting:** 16 gauge stainless steel cabinet with flange featuring 3/8" return for recessed mounting in wall. Unit fits in standard 3-5/8" deep wall.

**Supply:** 1" NPT female inlet.

**Waste:** 1" IPS stainless steel drain elbow on front of unit.

**Sign:** ANSI-compliant identification sign.

**Quality Assurance:** Unit is completely assembled and water tested prior to shipment.

**NOTE:** ANSI Z358.1-2014 specifies that shower heads be installed no more than 96" above the finished floor. This unit should therefore not be installed in ceilings over 8 feet. For higher ceiling heights, we recommend the GBF2152 or GBF2172 units.

**U.S. Patent 5,768,721**

#### Available Options

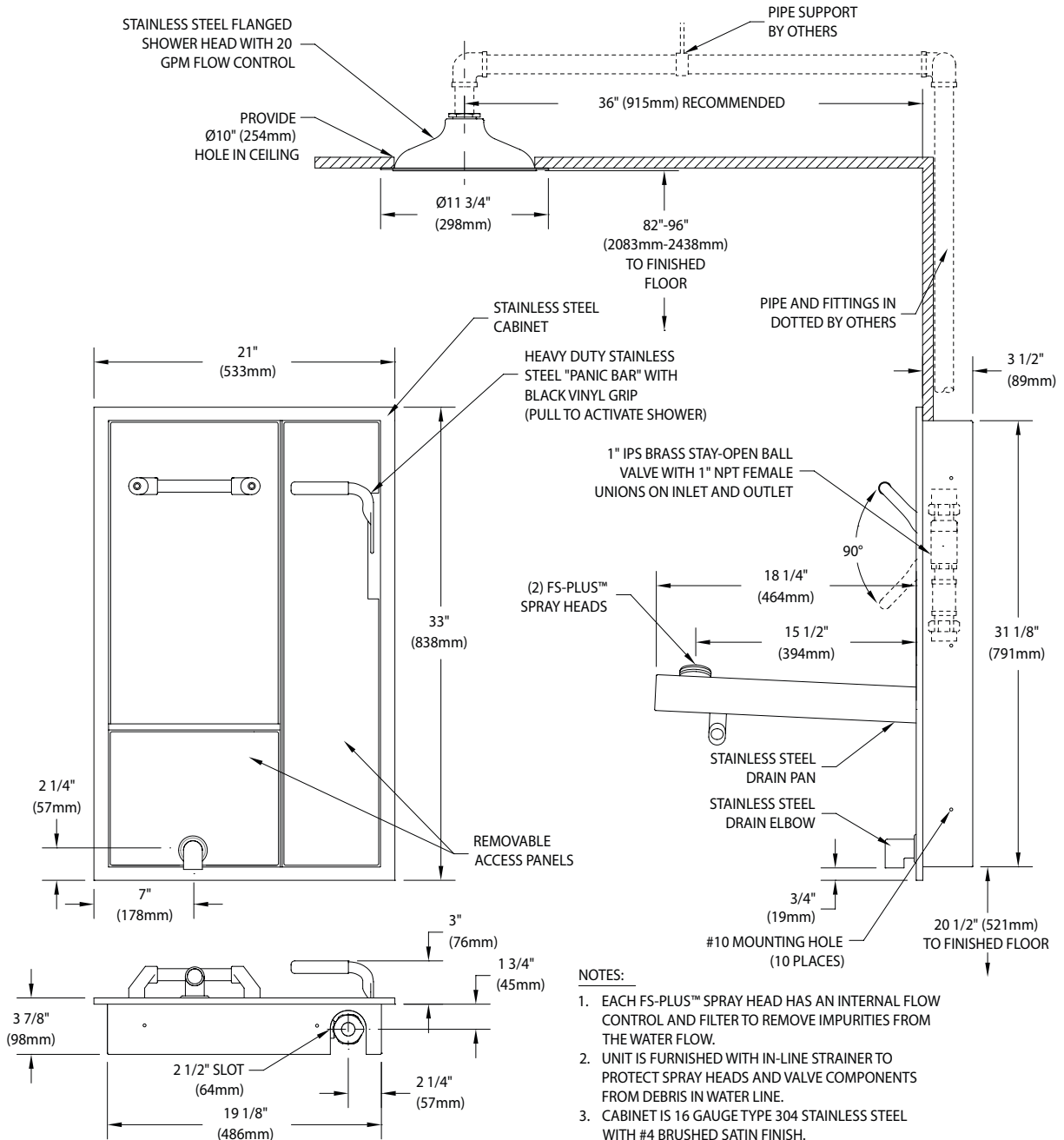
- ☐ **AP250-065** Modesty Curtain
- ☐ **AP280-235** Electric Light and Alarm Horn
- ☐ **AP280-237** Electric Light and Alarm Horn with Silencing Switch
- ☐ **G3800LF** Thermostatic Mixing Valve



Note: Shown with optional AP280-235 electric light and alarm horn unit (sold separately).



### GBF2162 Recessed Safety Station with Drain Pan and Daylight Drain, Recess Mounted Shower Head



THIS SPACE FOR ARCHITECT/ENGINEER APPROVAL

Sign Included



Due to continuing product improvement, the information contained in this document is subject to change without notice. All dimensions are ± 1/4" (6mm). rev. 022120

