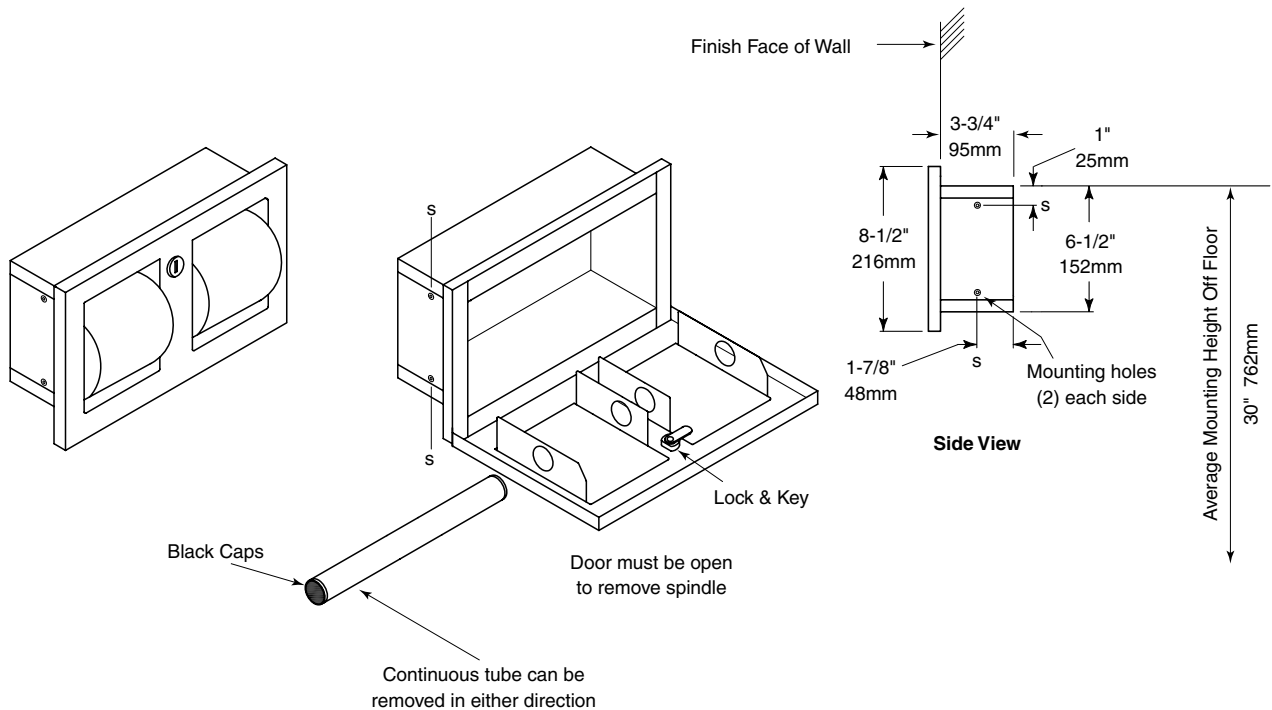


Date:

Project Name:



Rough Wall Opening
12-1/2" (318mm) Wide
7" (179mm) High
4" (102mm) minimum
recessed depth

CONSTRUCTION:

Unit fabricated of type 304 stainless steel with exposed surfaces having a satin-finish. Door fabricated of EXTRA HEAVY 18-gauge (1.2mm) fitted with tumbler lock. Spindle is continuous 1" (25mm) diameter 18-

gauge (1.2mm) stainless steel tubing with plastic end caps. Unit accepts two 1500 sheet rolls. Unit comes keyed like other GAMCO washroom accessories.

OVERALL DIMENSIONS:

13-3/4" W x 8-1/2" H x 4-1/2" D (349 x 216 x 114mm)

NOTE:

Four (4) #10 x 1/2" (38mm) Phillips pan-head sheet metal screws with anchors are provided by GAMCO for installation.

Recessed Multi-Roll Toilet Tissue Dispenser shall be Model TTD-9 of GAMCO Commercial Restroom Accessories, A Division of Bobrick, One Gamco Place, Durant, OK