



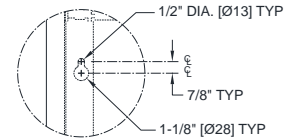
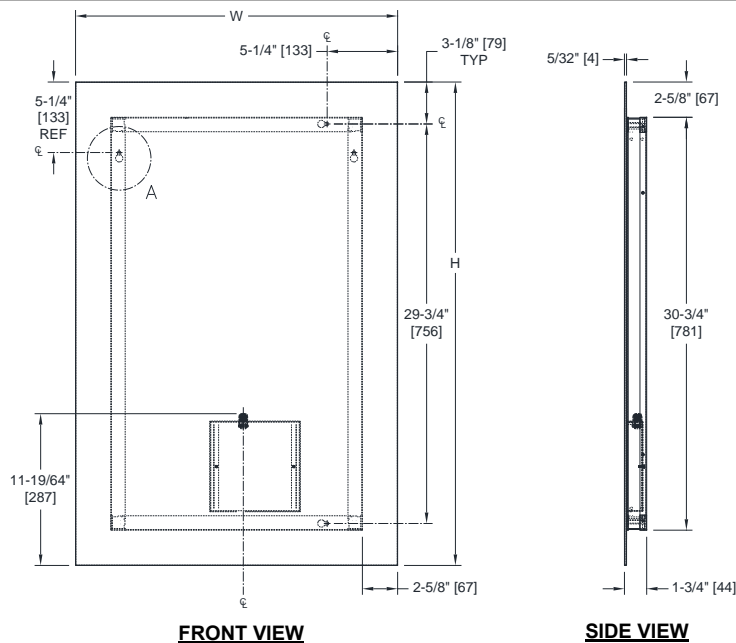
AMERICAN SPECIALTIES, INC.
 441 Saw Mill River Road, Yonkers, NY 10701
 (914) 476.9000 • (914) 476.0688
 www.americanspecialties.com

MODEL №: 0640

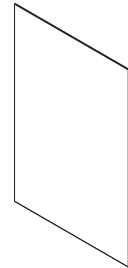
ISSUED: 16 DEC 2020

REVISED:

FRAMELESS LED LIGHTED MIRROR



DETAIL A



ISOMETRIC

NOTE

ALL DIM'S INCH [MM]

ILLUSTRATION FOR REF ONLY AND NTS

FOR CLEANING INSTRUCTIONS SEE APPROPRIATE SECTIONS IN PRODUCT CARE & MAINTENANCE BULLETIN (PCM) ON ASI WEBSITE

SPECIFICATION

Frameless polished edge mirror with integral mounting frame and silhouette LED halo lighting shall be consistent with A glazing and shall be 5/32" [4] thick. Hard wired LED lighting system shall be UL listed and shall operate on 100/240 VAC 50/60 Hz. Light color shall be the equivalent of 6000 K. Unit shall be mountable in horizontal or vertical format without additional brackets or adaptations to mounting provisions. Power cord is included for use by owner if appropriate socket is provided on wall (by others) concealed by mounting frame of mirror and is 34" [86] long with 3-prong USA pattern plug and bare wires for connection to hard wiring in LED control box. Mirror glass and LED system shall be warranted for manufacturing defects for a period of five (5) years from ship date.

Frameless LED Lighted Mirror shall be Model № 0640-_____ (specify W x H) of American Specialties, Inc., 441 Saw Mill River Road, Yonkers, NY 10701-4913

INSTALLATION

Keyhole mounting slots are provided in long and short sides of back frame. Mirror is to be hung on pre-installed pan head screws (provided) to be retained by screw heads engaged into the slots. Mounting screws must be tightened into appropriate wall anchors (by others) or blocking (by others) to suit site conditions adequate to support weight of mirror. Power must be provided (by others) to allow hard wiring (by others) of LED control circuitry. Wall switch (by others) should be installed (by others) to control on-off function. Face of mirror will be 1-3/4" [45] from wall when installation is completed.

OPERATION

External wall switch (by others) controls on-off function of silhouette LED halo lighting. Clean mirror regularly with the same methods used for other windows or mirrors in dry locations.

Schedule of Availability

Model №	Size (W x H) field swap-able	Weight (lb[kg])	Brightness (Lumens)
0640-2436	24 x 36 [610 x 914]	42 [19]	2352
0640-3036	30 x 36 [762 x 914]	53 [24]	2640
0640-4836	48 x 36 [1219 x 914]	84 [38]	3514
0640-6036	60 x 36 [1524 x 914]	105 [48]	4128