



AMERICAN SPECIALTIES, INC.
 441 Saw Mill River Road, Yonkers, NY 10701
 (914) 476.9000 • (914) 476.0688
 www.americanspecialties.com

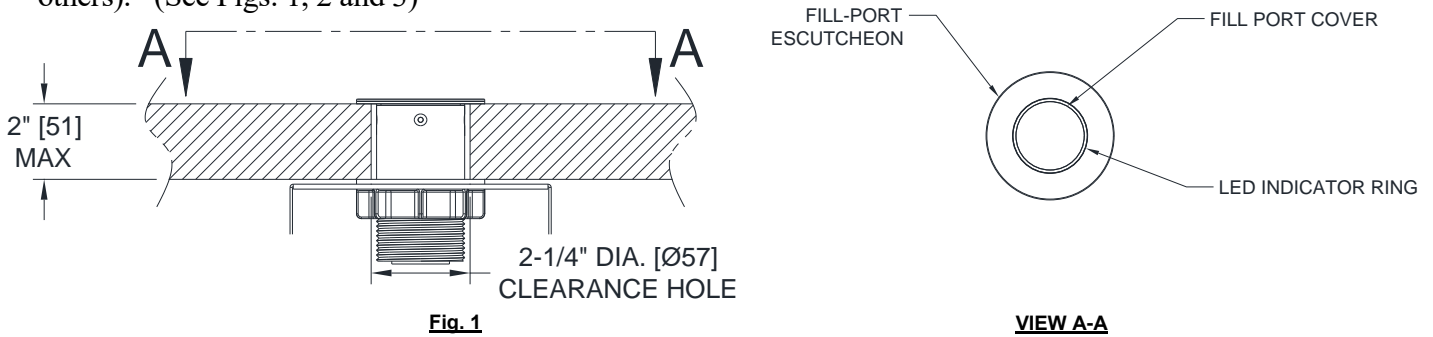
MODEL №: 0387 OM&IG

ISSUED: 30 OCT 2020

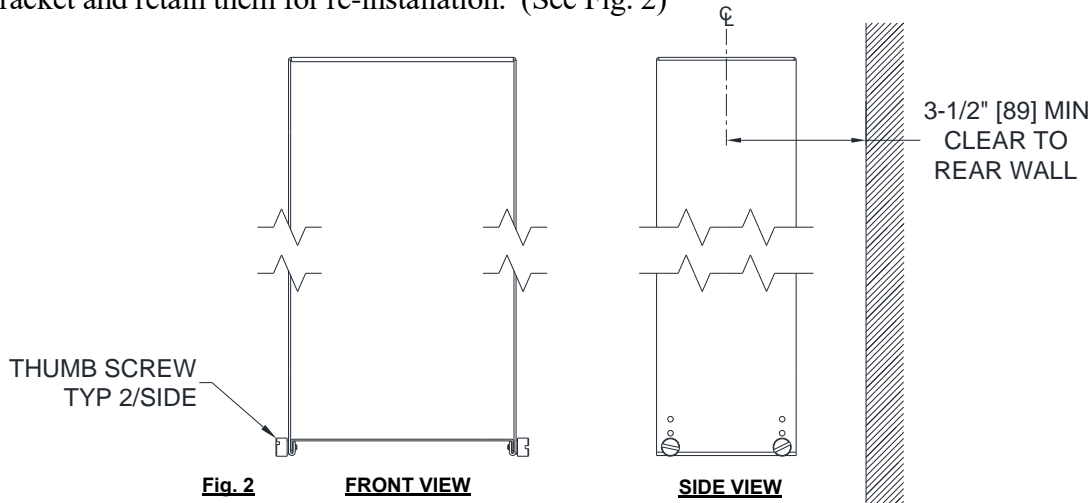
REVISED: 12 JAN 2021

OWNER'S MANUAL & INSTALLATION GUIDE, VANITY MOUNTED TOP FILL PORT, TANK AND CONTROL MODULE (Pg 1 of 5)

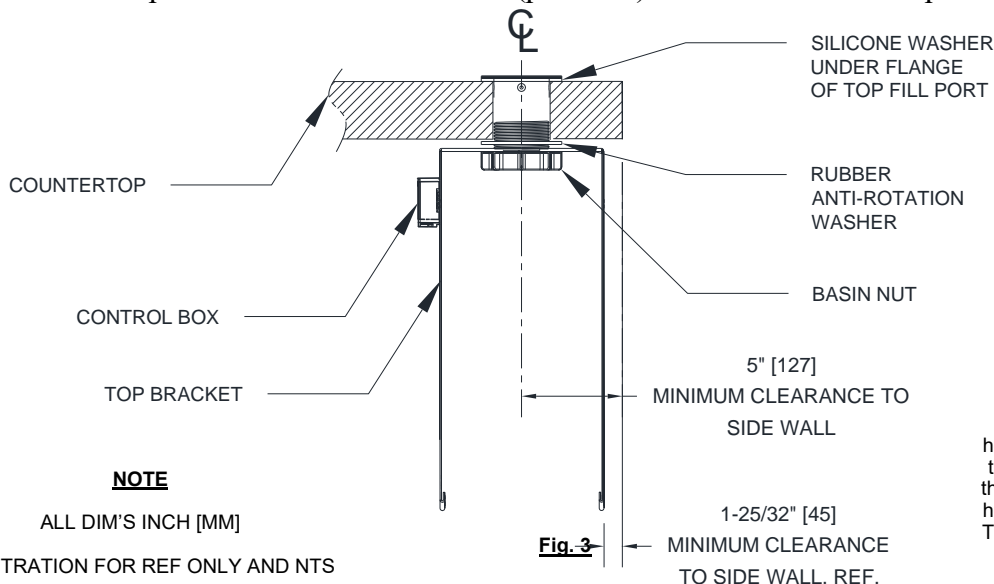
1. **READ AND RETAIN** complete instructions before beginning installation. This Top-Fill Port and Tank (TFT) is designed to be part of a full system with either Liquid SD's (0386-0388) or Foam SD's (0385-0389) and appropriate TDS and OM&IG should be reviewed prior to installation. Mount Top-Fill Port to vanity with hardware (supplied) through 2-1/4" Dia. [Ø57] mounting hole in deck of max thickness 2" [51] (provided by others). (See Figs. 1, 2 and 3)



2. Remove bottom bracket by unscrewing four (4) thumb-screws located in the bottom portion of tank bracket and retain them for re-installation. (See Fig. 2)



3. Mount the top tank bracket with basin nut (provided) to hold the bracket in place by clamping with basin nut.



NOTE

ALL DIM'S INCH [MM]

ILLUSTRATION FOR REF ONLY AND NTS

HINT FOR INSTALLER

This step may be made easier with a helper to hold the Top Fill Port Escutcheon while tightening the Basin Nut under the vanity top. Alternatively the temporary use of shipping tape or duct tape to hold the flange against rotation may be of benefit. The adhesive residue from this tape method must be cleaned off immediately after the nut is tightened to retain the Top Tank Bracket.



AMERICAN SPECIALTIES, INC.
441 Saw Mill River Road, Yonkers, NY 10701
(914) 476.9000 • (914) 476.0688
www.americanspecialties.com

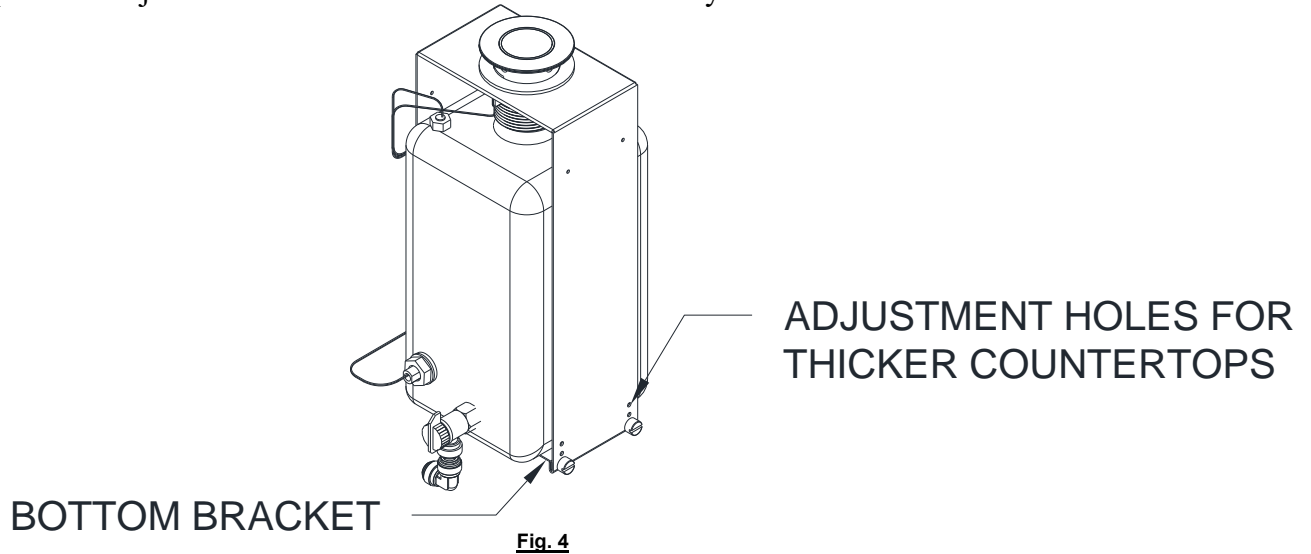
MODEL №: 0387 OM&IG

ISSUED: 30 OCT 2020

REVISED: 12 JAN 2021

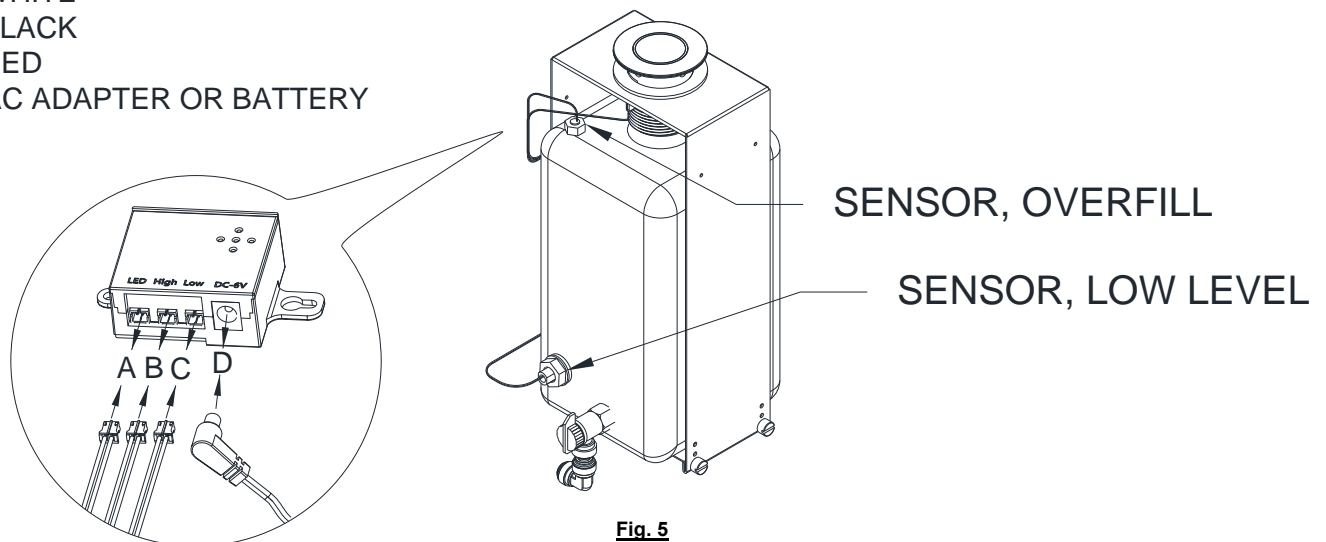
OWNER'S MANUAL & INSTALLATION GUIDE, VANITY MOUNTED TOP FILL PORT, TANK AND CONTROL MODULE (Pg 2 of 5)

4. Engage the tank neck with gasket onto Top-Fill Port tailpiece and re-install the bottom bracket using four (4) previously retained thumb-screws. To provide support for tank with adequately engaged tank neck seal onto fill port tail piece the adjustment holes to raise the bottom bracket may be utilized.



5. Connect the low level sensor (legend C, Color Red), overflow protection sensor (legend B, Color Black) and LED wires (legend A, Color White) to the control box according to the marked color codes and identification legends.

- A: WHITE
- B: BLACK
- C: RED
- D: AC ADAPTER OR BATTERY



6. Power unit by connecting the power adapter (Model №72-ACA, provided; or optional Model No 0385-BP) to DC power jack located on control box.
7. Connect soap supply tube from CM T-fitting (order Model № 0385 or Model № 0386-separately) to L-fitting tank shutoff valve.



AMERICAN SPECIALTIES, INC.
441 Saw Mill River Road, Yonkers, NY 10701
(914) 476.9000 • (914) 476.0688
www.americanspecialties.com

MODEL №: 0387 OM&IG

ISSUED: 30 OCT 2020

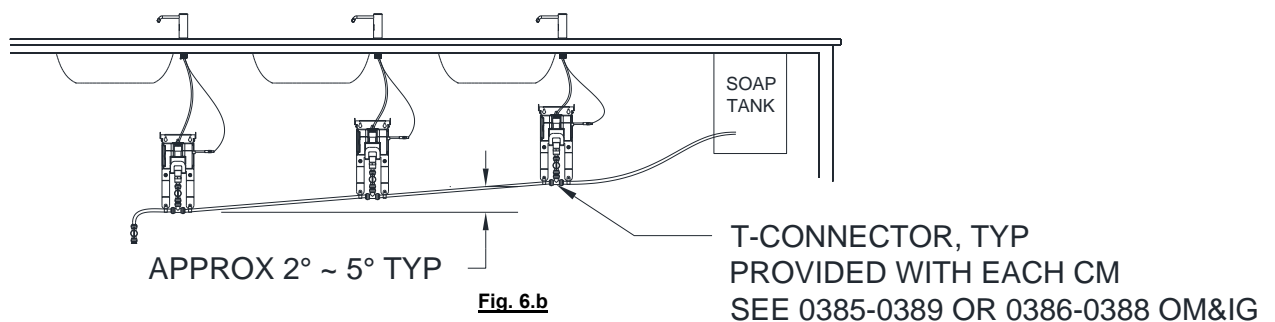
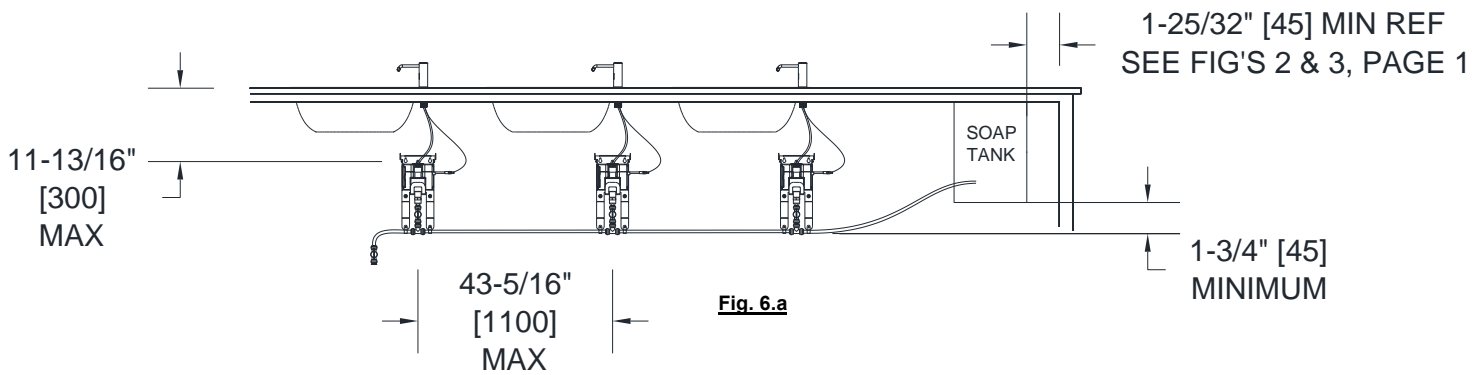
REVISED: 12 JAN 2021

OWNER'S MANUAL & INSTALLATION GUIDE, VANITY MOUNTED TOP FILL PORT, TANK AND CONTROL MODULE (Pg 3 of 5)

8. Use suction cup (provided) to open the Top Fill Port and fill tank with liquid soap or foaming liquid as per dispenser OM using the funnel (provided with TFT).
9. Store the suction cup and funnel for use when refilling tank. When filling the tank, the top level sensor will sound the buzzer when maximum soap level is reached.
10. Diagnostic slowly flashing green LED indicates low soap volume. Green light flashes when soap level is below 25~30%. Red light flashes to indicate low power level (only with batteries).

RECOMMENDED INSTALLATION

1. To ensure proper liquid feeding to the pumps, install all pumps leveled. (See Fig. 6.a)
2. If each pump cannot be leveled, install each successive pump lower than its preceding one. (See Fig. 6.b)





AMERICAN SPECIALTIES, INC.
441 Saw Mill River Road, Yonkers, NY 10701
(914) 476.9000 • (914) 476.0688
www.americanspecialties.com

MODEL №: 0387 OM&IG

ISSUED: 30 OCT 2020

REVISED: 12 JAN 2021

OWNER'S MANUAL & INSTALLATION GUIDE, VANITY MOUNTED TOP FILL PORT, TANK AND CONTROL MODULE (Pg 4 of 5)

CLEANING AND MAINTENANCE

Periodic cleaning of the unit is recommended to ensure optimal performance.

1. When annual cleaning cycle is nearing, be aware of usage to coordinate blinking green refill advisory with removal of soap residue during purging process.
2. Turn all the shut-off valves to “OFF” on CM’s above the T-fittings (See OM&IG for 0385-0389 or 0386-0388 as appropriate for Foam or Liquid dispensing systems) to prevent rinse from entering the SD’s by inadvertent triggering while cleaning. With use of Suction Cup Tool remove and retain the Top Fill Port Cover.
3. Open the drain valve at supply tubing run end and provide (by others) a catch basin or bucket of approximately 5 gal (19 L) capacity.
4. Let drain run until drips have slowed to approx. 10 sec repeat cycle.
5. Close drain valve.
6. Pour approximately one and a half (1.5) gallons of warm (approx. 115°F [46°C] ± 4°) soapy water (use of existing residue soap if not congealed will be adequate) into fill port or enough to cause system test of overflow protection sensor (full level) for 15 sec audible signal duration.
7. Allow rinse soapy water added in step 6 to sit for approximately 10 minutes.
8. Open drain valve to let complete purge occur.
9. After drip cycle has slowed to approx. a 20 sec repeat pattern close the drain valve.
10. Pour approximately 1 qt [0.9L] new fresh soap of type consistent with system type (either Foam or Liquid dispensing, see TDS and OM&IG for specific requirements for Model № product installed) into fill port.
11. Open the drain valve until clean fresh soap is running out in steady stream, then shut valve.
12. Using fill funnel provided with Model № 0387 TFT (to prevent turbulent fill flow and entrained air from causing eruptive overflow w/o warning) add approximately 1.5 gal [5.7 L] additional soap as added in step 10 above into fill port until full sensor advises full level with audible signal.
13. Open ALL the CM shutoff valves closed in step 2 above.
14. Close the Top Fill Port with the cover provided.
15. Clean the funnel and store the suction cup tool and cleaned funnel for future use during next refill cycle.
16. Test the individual SD’s in the system to ensure new fresh soap is being dispensed w/o air “water-hammer” effects (e.g. spitting entrained air pockets).
17. Remove the basin or bucket used in step 3 above and close vanity access panel.
18. Collect any containers, rags or materials used during service to leave a spotless vanity area.
19. Wipe clean the Top Fill Port from any filling splashes with a clean moistened soft cleaning rag with no other agents or debris embedded in cloth or synthetic weave.

DO NOT use steel wool or cleansing agents containing alcohol, acid, abrasives, or the like. Use of any cleaning or maintenance products containing these substances could damage the finish of the soap dispenser. For surface cleaning, use ONLY mild soap and water on a wet cloth, then wipe dry with a clean cloth or towel. When cleaning bathroom tiles or counters, protect the soap dispenser from any splattering of harsh cleansers



AMERICAN SPECIALTIES, INC.
 441 Saw Mill River Road, Yonkers, NY 10701
 (914) 476.9000 • (914) 476.0688
 www.americanspecialties.com

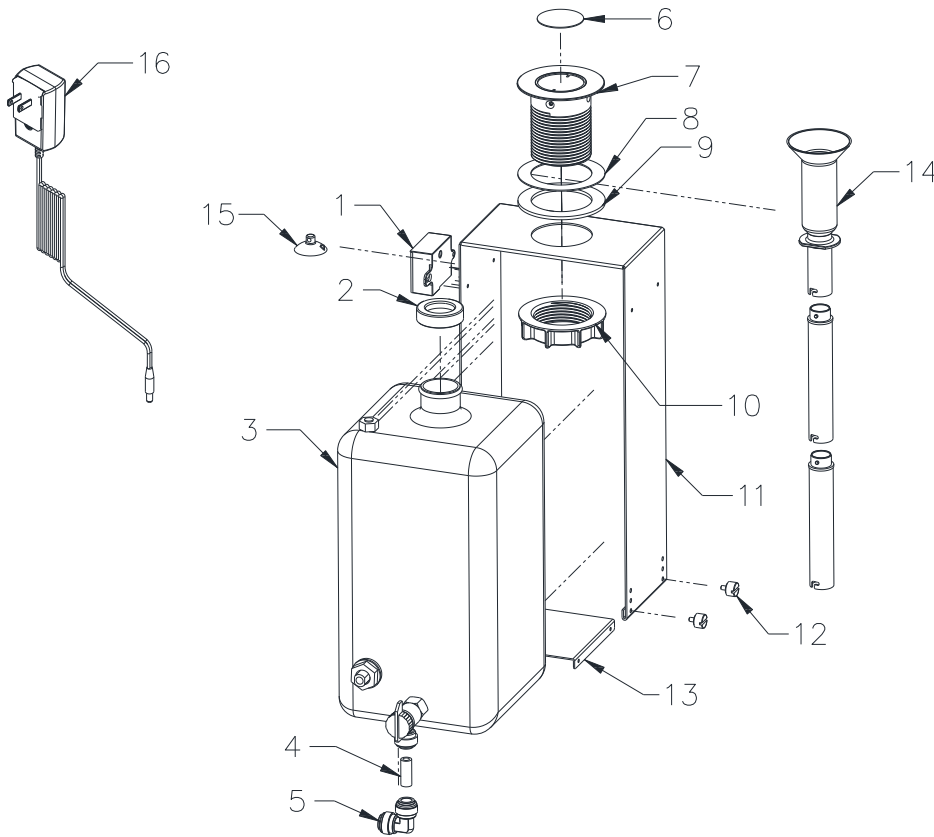
MODEL №: 0387 OM&IG

ISSUED: 30 OCT 2020

REVISED: 12 JAN 2021

OWNER'S MANUAL & INSTALLATION GUIDE, VANITY MOUNTED TOP FILL PORT, TANK AND CONTROL MODULE (Pg 5 of 5)

SOAP TANK DIAGRAM & REPAIR PARTS LIST



Item	Description
1	Control Box, may be installed either side
2	Tank Neck Gland Seal
3	Soap Tank Assembly
4	Short Connector Tube
5	90° Elbow Swivel Fitting
6	Fill Port Cap
7	Fill Port and Tail-Piece
8	Silicone Washer
9	Rubber Anti-Rotation Washer
10	Basin Nut
11	Top Bracket (Tank Hanger)
12	Thumb Screw (Typ 4)
13	Bottom Bracket (Tank Shelf)
14	Funnel, with two (2) extension tubes
15	Suction Cup (Tool for removal of Fill Port Cap)
16	AC Adapter, Model № 72-ACA

NOTE

Diagram NTS for REF only

Wires, Cables, Plugs not shown for clarity of view

Problem Symptom (w/ Batteries)	Solution Diagnostic (w/ Batteries)
When first connected to power the LED does not flash green for 3 seconds	Check whether proper size and power batteries are in the battery pack and the LED wire is properly connected.
Power is low (LED flashes green)	Replace old batteries with new ones.
Soap level is low (LED flashes green)	Refill soap tank.
No LED indication or audible signal when soap level is full.	Replace old batteries with new ones.
	Verify the wires are properly connected to the control box.
	Replace the control box.

Problem Symptom (Adapter)	Solution Diagnostic (Adapter)
When first connected to power the LED does not flash green for 3 seconds	Check whether the adapter is plugged in & the LED wire is properly connected.
Soap level is low (LED flashes green)	Refill soap tank.
No LED indication or audible signal when soap level is full.	Verify the wires are properly connected to the control box.
	Replace the control box.
	The AC adapter may not be plugged in fully. Plug in the adapter.