



Z5590

1.6 GPF Children's Two-Piece Toilet TAG _____



Z5590

- 1.6 gpf (gallons per flush)
- Vitreous china
- Elongated, 10" high bowl
- Siphon jet flush action
- Fully glazed trapway
- Available with tank cover locking device
- 10" rough-in
- Includes bolt caps
- Weight: 66 lbs.

Engineering Specification:

- ☐ **Z5590** Vitreous china, 1.6 gpf [6 Lpf] two-piece toilet with 10" high bowl and tank complete with internal flush valve.

Z5590 Series

Suffix Options:

- ☐ **-VL** Tank with vandal-proof locking lid.

Recommended Trim:

- ☐ **Z5959SS-JUV**
White, open front juvenile toilet seat less cover with stainless steel check hinge.
- ☐ **Z5972-COMB**
Closet bolt & wax ring kit.

Optional Trim:

- ☐ **Z5975-FLO-JR**
PVC Flo-Bowl Jr. closet flange kit

These dimensions and specifications are subject to change without notice.

Fixture dimensions meet ANSI/ASME standard A112.19.2 and CAN/CSA B45 requirements.

This space is for Architectural/engineering Approval

See Zurn One Systems for suggested packages.

ZURN INDUSTRIES, INC. ♦ COMMERCIAL BRASS OPERATION ♦ 5900 ELWIN BUCHANAN DRIVE ♦ SANFORD NC 27330
Phone: 1-800-997-3876 ♦ Fax: 919-775-3541 ♦ World Wide Web: www.zurn.com
In Canada: ZURN INDUSTRIES LIMITED ♦ 3544 Nashua Drive ♦ Mississauga, Ontario L4V1L2 ♦ Phone: 905-405-8272 Fax: 905-405-1292

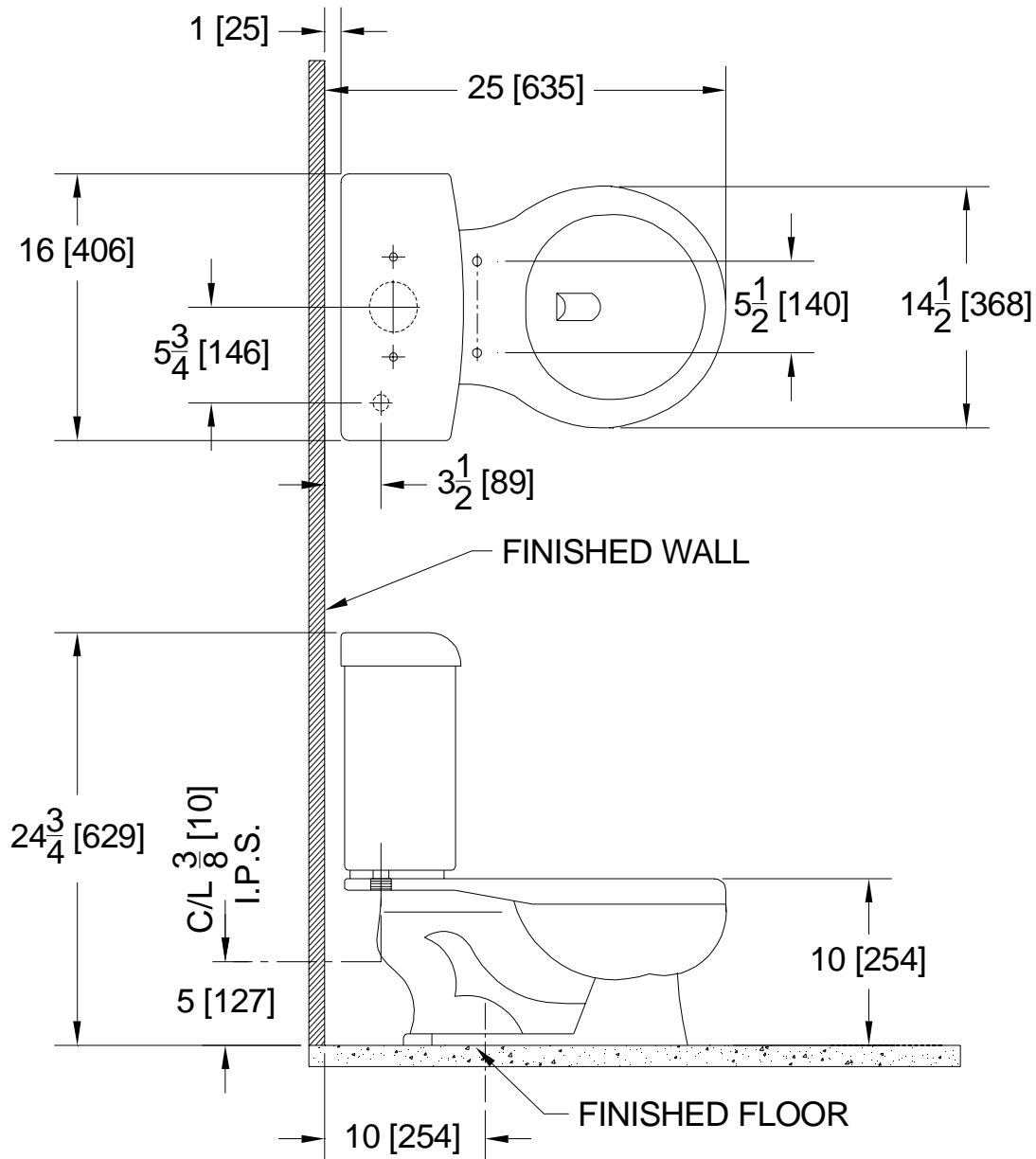


Z5590

1.6 GPF Children's Two-Piece Toilet Rough-in

TAG _____

Rough-in dimensions for Z5590



These dimensions and specifications are subject to change without notice.

Fixture dimensions meet ANSI/ASME standard A112.19.2 and CAN/CSA B45 requirements.

ZURN INDUSTRIES, INC. ♦ COMMERCIAL BRASS OPERATION ♦ 5900 ELWIN BUCHANAN DRIVE ♦ SANFORD NC 27330
Phone: 1-800-997-3876 ♦ Fax: 919-775-3541 ♦ World Wide Web: www.zurn.com
In Canada: ZURN INDUSTRIES LIMITED ♦ 3544 Nashua Drive ♦ Mississauga, Ontario L4V1L2 ♦ Phone: 905-405-8272 Fax: 905-405-1292