



Z5340-PED

20" x 18" Wall Hung Lavatory
W/ Half Pedestal

TAG _____



Z5340-PED Series

- 20" [508 mm] x 18" [457 mm]
- Vitreous china
- Faucet holes for single, 4", or 8" centers
- Wall hung lavatory provided with wall hanger or for use with concealed arm carrier systems
- Vitreous china half pedestal
- Front overflow
- Waste: 1-1/4" O.D.
- Depth: 6-3/8"

Z5340-PED Series

Recommended Trim:

- Z8743-PC** Grid Strainer.
- Z8700** Series P-Trap.
- Z8800** Series Stop with Flexible Supplies.
- Z8946-1-NT** ADA Trap, Stop, and Supply Protectors.

Optional Trim:

- Z8746-PC** ADA Grid Strainer.
- Z8946-3-NT** ADA Trap, Stop, and Supply Protectors for Offset Grid Strainers.

Engineering Specification:

- Z5341-PED** 20" x 18" vitreous china wall hung lavatory with single faucet hole and half pedestal. Provided with hanger plate and holes for concealed arm carrier systems.
- Z5344-PED** 20" x 18" vitreous china wall hung lavatory with 4" center faucet holes and half pedestal. Provided with hanger plate and holes for concealed arm carrier systems.

These dimensions and specifications are subject to change without notice.

Fixture dimensions meet ANSI/ASME standard A112.19.2-2003 and CAN/CSA B45 requirements.

Meets the American Disabilities Guidelines and ANSI A117.1 requirements when lavatory is installed 34" [864mm] from finished floor.



ZURN INDUSTRIES, LLC. ♦ COMMERCIAL BRASS OPERATION
 5900 ELWIN BUCHANAN DRIVE ♦ SANFORD NC 27330
 Phone: 1-800-997-3876 ♦ Fax: 919-775-3541
 www.zurn.com
 In Canada: ZURN INDUSTRIES LIMITED
 3544 Nashua Drive ♦ Mississauga, Ontario L4V1L2
 Phone: 905-405-8272 Fax: 905-405-1292

Architectural/Engineering Approval

The information contained in this document is subject to change without notice. Please contact Zurn for most up to date information.

See Zurn One Systems for suggested packages.



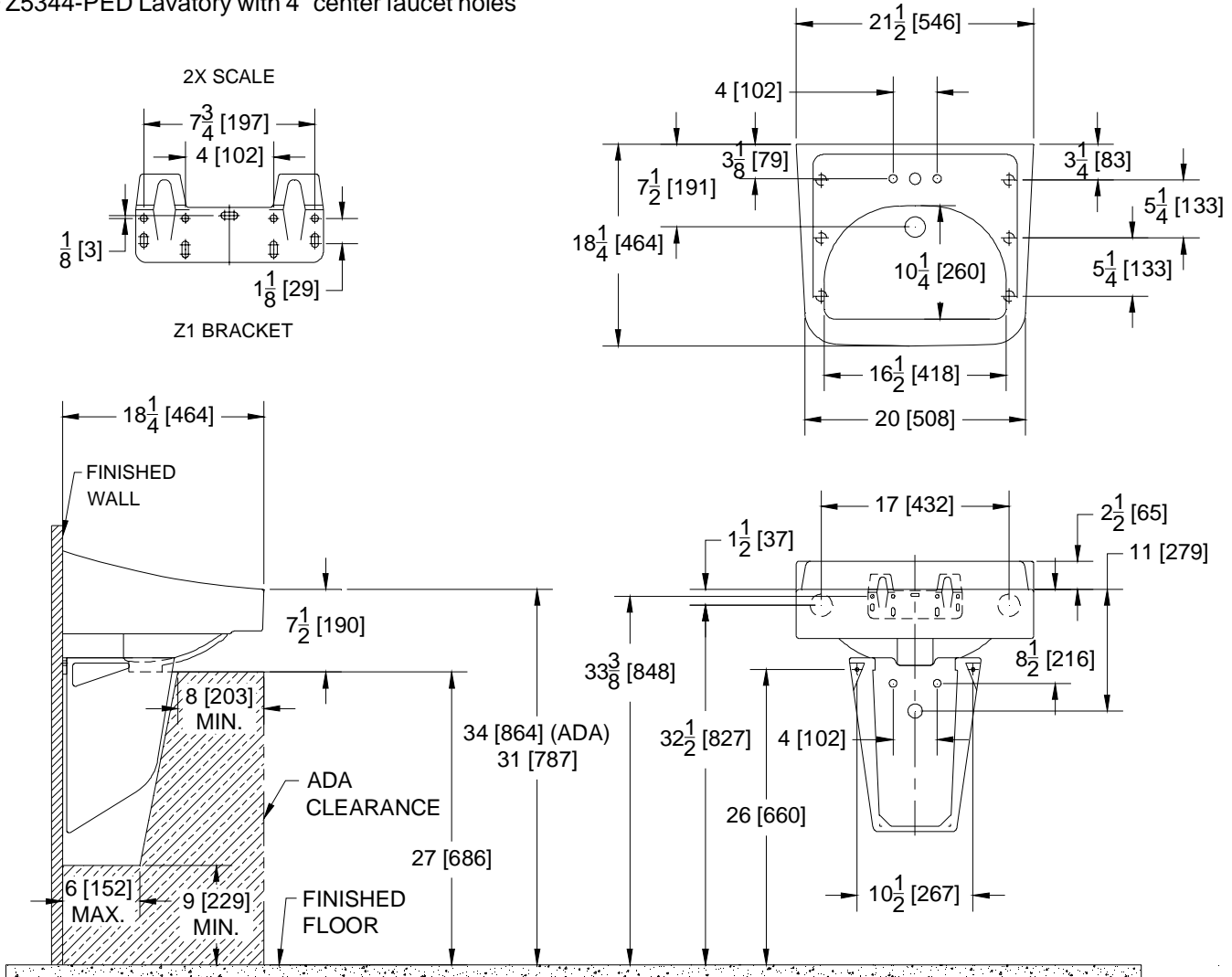
Z5340-PED

20" x 18" Wall Hung Lavatory W/ Half Pedestal

TAG _____

Rough-in dimensions for Z5340-PED Series

- Z5341-PED Lavatory with single faucet hole
- Z5344-PED Lavatory with 4" center faucet holes



Note: Rough-in for concealed arm carrier, see Zurn Z-1231 Rough-in sheet.

These dimensions and specifications are subject to change without notice.

Fixture dimensions meet ANSI/ASME standard A112.19.2-2003 and CAN/CSA B45 requirements.

Meets the American Disabilities Guidelines and ANSI A117.1 requirements when lavatory is installed 34" [864mm] from finished floor.



ZURN INDUSTRIES, LLC. ♦ COMMERCIAL BRASS OPERATION
 5900 ELWIN BUCHANAN DRIVE ♦ SANFORD NC 27330
 Phone: 1-800-997-3876 ♦ Fax: 919-775-3541
 www.zurn.com
 In Canada: ZURN INDUSTRIES LIMITED
 3544 Nashua Drive ♦ Mississauga, Ontario L4V1L2
 Phone: 905-405-8272 Fax: 905-405-1292

Rev. D
Dwg. No. 82531

Date: 12/5/11
Product No. Z5340-PED