



1PA, 2PA Prefabricated Modular Panelon Shower Systems



Signed approvals are required prior to fabrication.

Specifications

Size and Capacity

Panelon showers are constructed of type 304 stainless steel. Shower panels and stanchions are 16 gauge. Heavy gauge end caps, access panels and corner sections have hemmed edges. Stanchion flanges are 3/16" thick. All exposed parts are either stainless steel or chrome-plated brass. Supply piping is type "L" copper tubing sized according to number of heads served. Mixing chambers are cast brass. Supply fittings are wrought copper or cast brass.

Standard Equipment

Flow Control

A 1.5 GPM (5.7 LPM) flow control is standard. Actual flow may vary, but will not exceed 2.0 GPM (7.6 LPM) max.

Housing

Shower panels, end caps, corners, access panels and stanchion systems (as required) provide stainless steel housing to conceal shower piping. All edges and corners are smooth and rounded, and all joints are tight and close fitting. Standard stainless steel soap dish for each station.

Filler Pieces

Slot and cage nut assemblies at each adjustable access opening and end cap prevent accidental panel scratching due to drill slips and decreases installation time.

Stanchions

Stanchions are 2-1/4" x 4-3/4" 16 gauge stainless steel with 1/8" thick flanges. Ceiling flanges provide plus or minus 2" vertical alignment.

Fasteners and Mounting Materials

Vandal-proof stainless steel screws for securing all housing components. Mounting brackets for wall-mounted panels and anchoring flanges for stanchions. Bolts for floor and ceiling connections. Provided by installer: concealed screws and anchors for wall and ceiling connections.

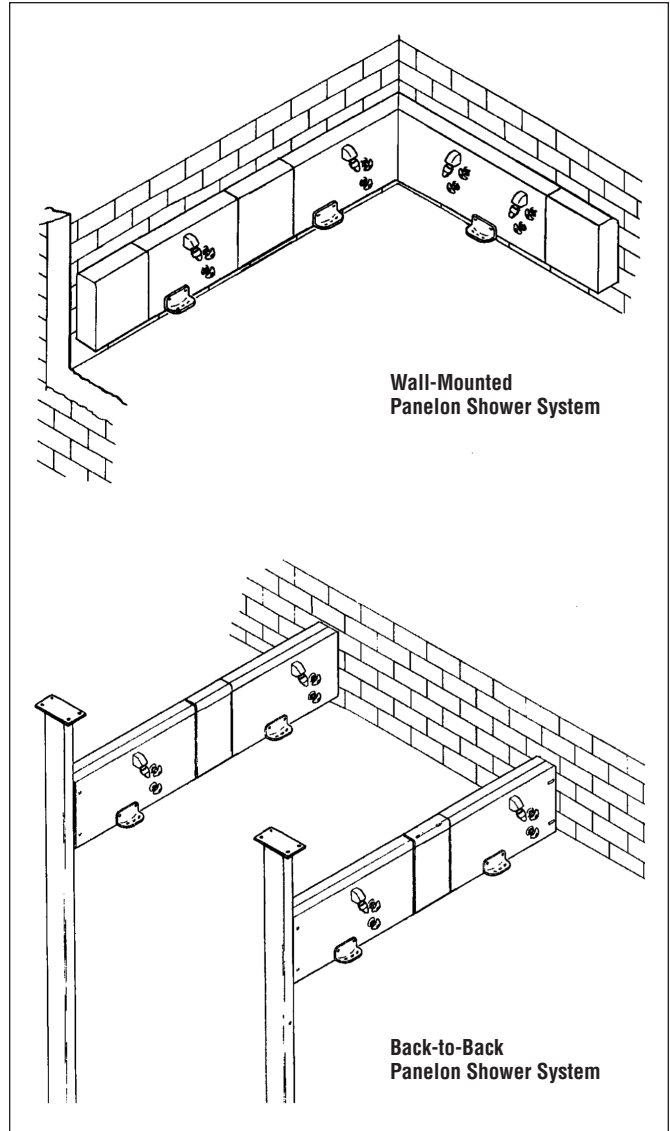
Supply Inlets

Supply inlets are male nominal copper tube and sized according to the number of heads as follows:

- 1 – 4 heads: 3/4"
- 5 – 8 heads: 1"
- 9 – 12 heads: 1-1/4"
- 12 heads and over: 1-1/2"



*For Panelons, one soap valve is furnished accessible to each user.
Usually centered between shower heads.*





Prefabricated Modular Panelon Shower Systems

<p>Models (Must select one)</p> <table style="width: 100%; border-collapse: collapse;"> <tr> <th style="text-align: left; width: 20%;">Model Number</th> <th style="text-align: left;">Description</th> </tr> <tr> <td><input type="checkbox"/> 1PA</td> <td>Wall-Mounted Panelon Shower System*</td> </tr> <tr> <td><input type="checkbox"/> 2PA</td> <td>Back-to-Back Panelon Shower System*</td> </tr> </table>	Model Number	Description	<input type="checkbox"/> 1PA	Wall-Mounted Panelon Shower System*	<input type="checkbox"/> 2PA	Back-to-Back Panelon Shower System*	<p>Optional Selections</p> <p>Volume Control (only available on S15 and S20 showerheads)</p> <p><input type="checkbox"/> AKV Allen Key Volume Control</p> <p><input type="checkbox"/> LHV Lever Handle Volume Control</p> <hr/> <p>Ball Joint (only available on S15 and S20 showerheads)</p> <p><input type="checkbox"/> LBJ Lockable Ball Joint</p> <hr/> <p>Miscellaneous</p> <p><input type="checkbox"/> SHV Vertical Shroud*</p> <p><input type="checkbox"/> RSD Recessed Soap Dish (Not available with 2PA showers)</p> <p><input type="checkbox"/> SCN Stanchions</p> <p><input type="checkbox"/> ST Stops in Supplies (each) (Included with EF, HD and TMV valves)</p>
Model Number	Description						
<input type="checkbox"/> 1PA	Wall-Mounted Panelon Shower System*						
<input type="checkbox"/> 2PA	Back-to-Back Panelon Shower System*						
<p>Standard Selections (Must select one from each category)</p> <p>Showerhead Height (select one)</p> <p><input type="checkbox"/> 6'-0" Standard Height</p> <p><input type="checkbox"/> 5'-6" Juvenile Height</p> <hr/> <p>Showerhead Type</p> <p><input type="checkbox"/> S15 Standard Showerhead (Flow Rate = 1.5 GPM/5.7 LPM)</p> <p><input type="checkbox"/> SX15 Severe Service Showerhead (Flow Rate = 1.5 GPM/5.7 LPM)</p> <p><input type="checkbox"/> S20 Standard Showerhead (Flow Rate = 2.0 GPM/7.6 LPM)</p> <p><input type="checkbox"/> SX20 Severe Service Showerhead (Flow Rate = 2.0 GPM/7.6 LPM)</p> <p><input type="checkbox"/> SF Deluxe Showerhead w/ Ball Joint (Flow Rate = 1.5 GPM/5.7 LPM)</p> <p><input type="checkbox"/> ES Economy Soft Flow w/ Ball Joint (Flow Rate = 2.0 GPM/7.6 LPM)</p> <p><input type="checkbox"/> J Multi-Jet Showerhead w/ Ball Joint (Flow Rate = 1.5GPM/5.7 LPM)</p> <p><input type="checkbox"/> LX Luxury Showerhead w/ Ball Joint (Flow Rate = 1.5GPM/5.7 LPM)</p> <p><input type="checkbox"/> B Axis Showerhead w/ Ball Joint (Flow Rate = 1.5GPM/5.7 LPM)</p> <hr/> <p>Valve Type (select one)</p> <p><i>Hot/Tempered and Cold Supplies</i></p> <p><input type="checkbox"/> EF Equa-Flo Pressure Balancing Valve</p> <p><input type="checkbox"/> HD Equa-Flo HD Pressure Balancing Valve</p> <p><input type="checkbox"/> TMV Thermostatic Mixing Valve</p> <p><input type="checkbox"/> HC Hot and Cold Compression Valve</p> <p><i>Single Tempered/Cold Supply</i></p> <p><input type="checkbox"/> PM Presto 50B Mechanical Metering Valve</p> <p><input type="checkbox"/> AST Air Metering Valve</p> <p><input type="checkbox"/> TT TouchTime® Metering Valve**§</p>	<p>*Non-cancelable, non-returnable.</p> <p>**TT valves require optional 24V Class 2 transformers, available as a separate item from Bradley.</p> <p>§ Please visit www.bradleycorp.com/dc for important information regarding a regulatory requirement to convert Bradley's TT activations from AC to DC starting in late 2016.</p> <p>NOTE: For Panelons, one soap valve is furnished accessible to each user. Usually centered between shower heads.</p> <p>Verify all rough-in dimensions prior to installation.</p> <p>Consult local and national codes: conformity and compliance to local and national codes is the responsibility of the installer.</p>						

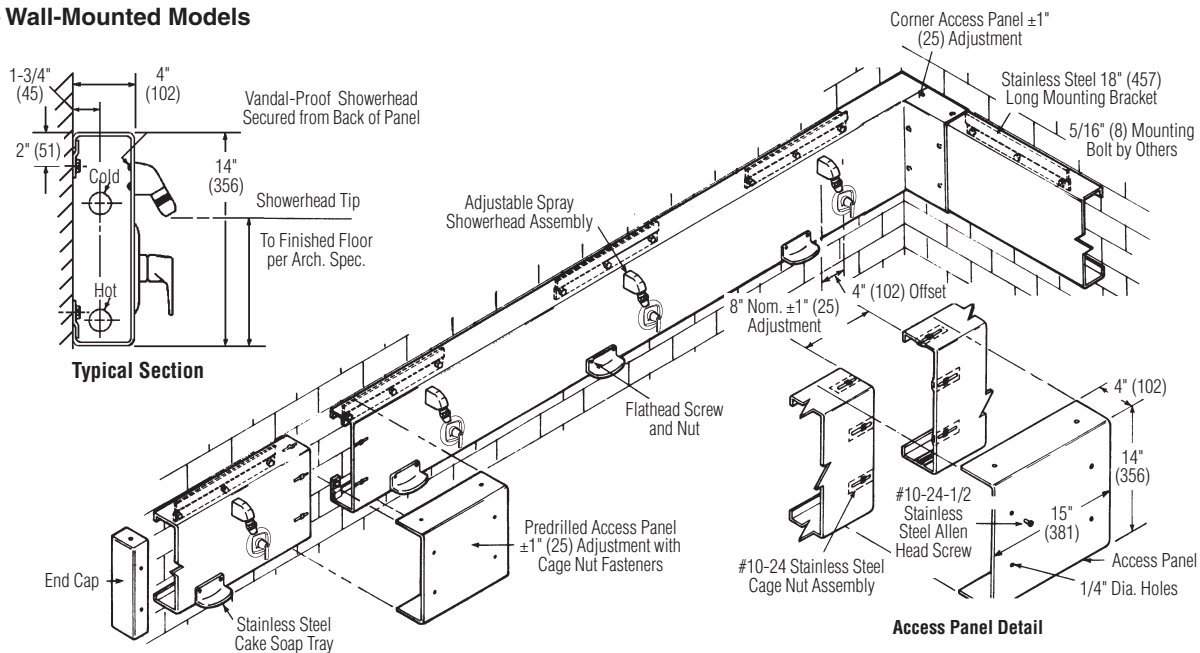


1PA, 2PA

Prefabricated Modular Panelon Shower Systems

1PA – Wall-Mounted Models

(mm)



2PA – Back-to-Back Models

