



AMERICAN SPECIALTIES, INC.

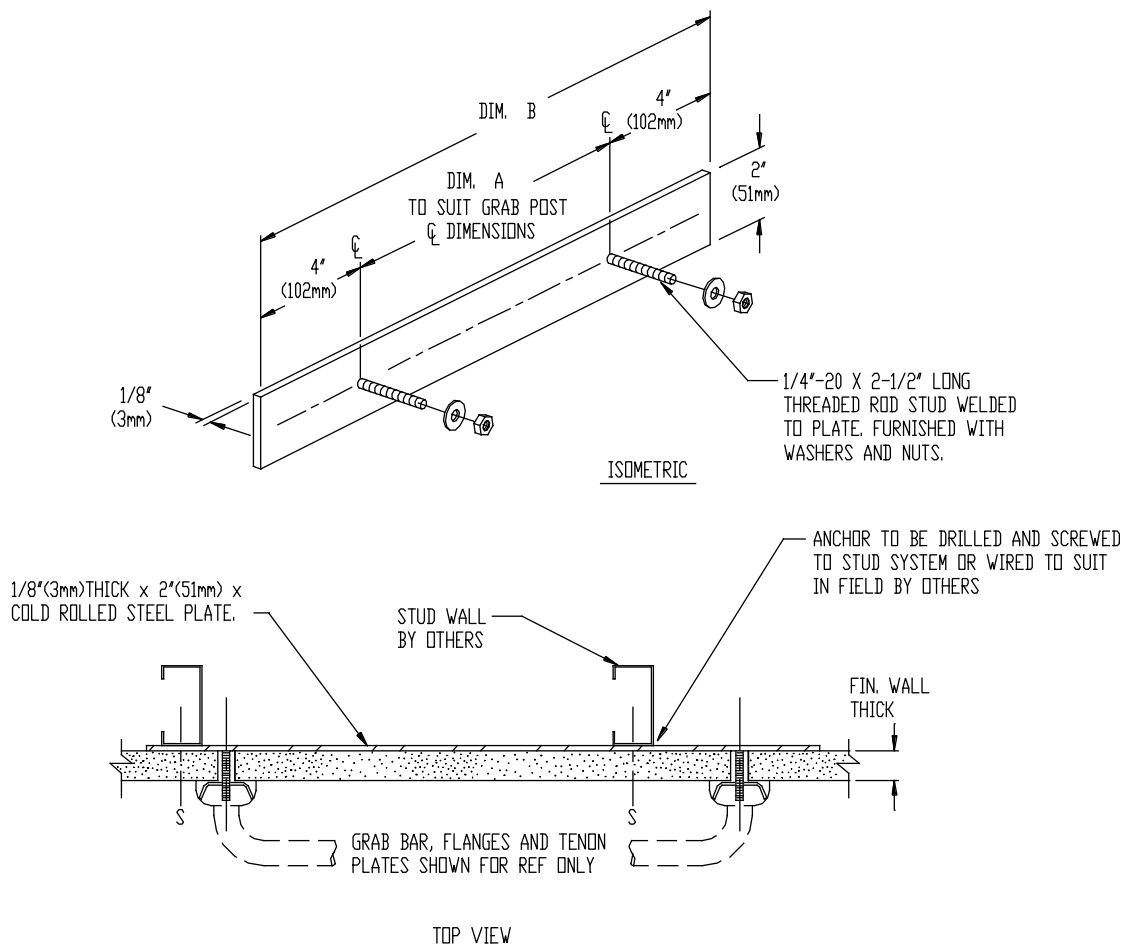
441 Saw Mill River Road, Yonkers, NY 10701 (914) 476-9000

MODEL No: 3919

ISSUED: 1-87

REVISED: 5-99

IN-WALL ANCHOR PLATE (PAGE 1 OF 2)



SPECIFICATION

In-Wall Anchor Plate is suitable for Grab Bars with two points of fastening (i.e. Types 01, 03, 11, 12, 14, 16, 17, 24, 40, 42) and shall be fabricated of 1/8" (3.2mm) thick x 2" (51mm) wide x "B" length (per schedule below). Two (2) 1/4 -20 x 2-1/2" (64mm) long threaded steel rods shall be welded to plate 4" (102mm) in from each end and flat washer and nut shall be supplied for each. Threaded rods are spaced to suit a dimension (per schedule below) equal to the center line to center line distance of the grab bar flange posts.

In-Wall Anchor Plate shall be Model № 3919-___ (fill in size) as manufactured by American Specialties, Inc., 441 Saw Mill River Road, Yonkers, New York 10701- 4913

INSTALLATION

Anchor is drilled and screwed, welded or wired to face of stud system or partition in exact mounting location to suit field conditions prior to application of finishing wall material (wallboard, tile etc.). Care should be exercised not to bend threaded rods during wall finish construction. Grab Bar Mounting Tenon Plates supplied with grab bar are secured to extending threaded steel rods after wall is finished. Grab Bar is then secured to tenon plate with set screws provided with grab bar.

Accessory Specialties

AMERICAN DISPENSER

Desert Ray Products

WATROUS INC.

THIS MANUFACTURER RESERVES THE RIGHT TO MAKE CHANGES IN DESIGN OR DIMENSIONS WITHOUT FORMAL NOTICE



AMERICAN SPECIALTIES, INC.

441 Saw Mill River Road, Yonkers, NY 10701 (914) 476-9000

MODEL No: 3919

ISSUED: 1-87

REVISED: 5-99

IN-WALL ANCHOR PLATE (PAGE 2 OF 2)

In-Wall Anchors - Order Chart and Size Schedule

Anchor Model №	Dimension "A" Center to Center Grab Bar Flange Dim.	Dimension "B" is Equal to Dim. "A" + 8"	Quantity Required
3919-18	18" (457mm)	26" (660mm)	
3919-24	24" (610mm)	32" (813mm)	
3919-30	30" (762mm)	38" (965mm)	
3919-36	36" (914mm)	44" (1118mm)	
3919-42	42" (1067mm)	50" (1270mm)	
3919-48	48" (1219mm)	56" (1422mm)	
3919-M			

Accessory Specialties

AMERICAN DISPENSER

Desert Ray Products

WATROUS INC.

THIS MANUFACTURER RESERVES THE RIGHT TO MAKE CHANGES IN DESIGN OR DIMENSIONS WITHOUT FORMAL NOTICE