



AMERICAN SPECIALTIES, INC.

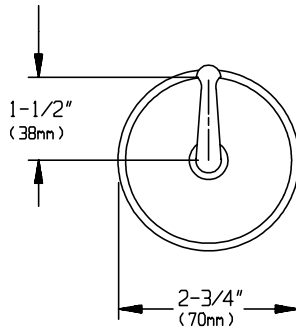
441 Saw Mill River Road, Yonkers, NY 10701 (914) 476-9000

MODEL No: 0751

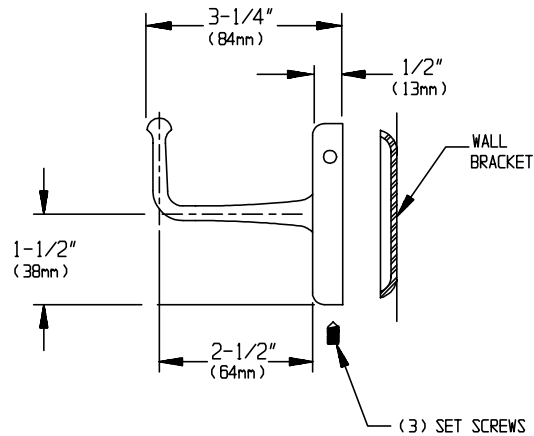
ISSUED: 1-87

REVISED: 3-04

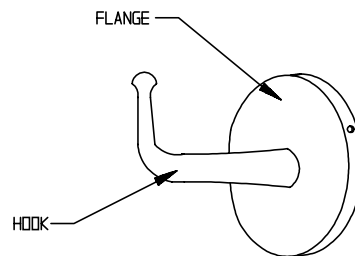
SURFACE MOUNTED HEAVY DUTY ROBE HOOK



FRONT VIEW



SIDE VIEW



PERSPECTIVE

SPECIFICATION

Surface Mounted Heavy-Duty Robe Hook shall be fabricated of brass with a chrome finish. Three 3/16" (5mm) stainless steel hex socket set screws shall be provided along perimeter of flange for securing to wall bracket. Hook shall be capable of supporting over 300 lbs. (136.1kg) when properly attached to building element.

Heavy Duty Robe Hook shall be Model N° 0751 as fabricated by American Specialties, Inc. 441 Saw Mill River Road Yonkers, New York 10701-4913.

INSTALLATION

Wall bracket is surface mounted using N°10 self tapping screws (by others) in a manner capable of resisting 300lbs (136.1 kg) of downward force. Ensure that mounting configuration complies with local building codes. Hook is secured to bracket by tightening stainless steel hex socket set screws. For compliance with ADA Accessibility Guidelines the height of the center-line of the hook above finished floor (AFF) should not exceed 54" (1372mm) when clear floor side reach access is provided or 48" (1219mm) AFF with clear floor forward reach access only provided.