



AMERICAN SPECIALTIES, INC.

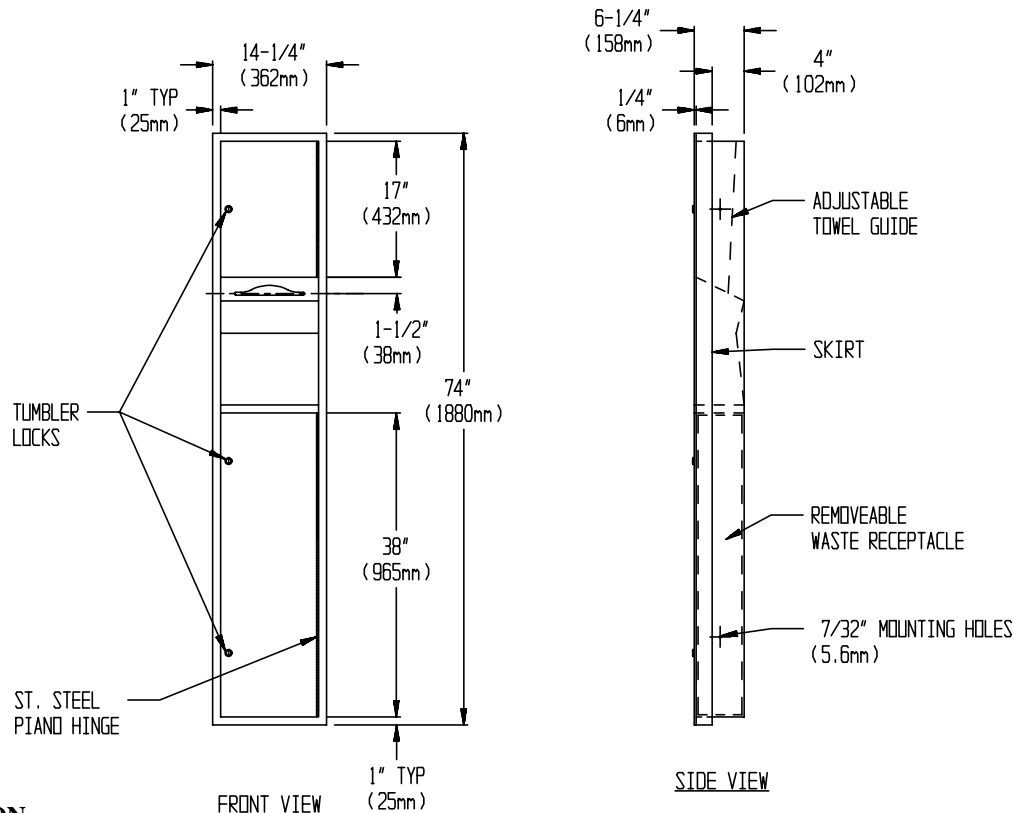
441 Saw Mill River Road, Yonkers, NY 10701 (914) 476-9000

MODEL No: 0460-2

ISSUED: 1-87

REVISED: 9-04

SEMI-RECESSED PAPER TOWEL DISPENSER AND WASTE RECEPTACLE



SPECIFICATION

Semi-Recessed Paper Towel Dispenser and Waste Receptacle Unit shall hold and dispense 800 standard multi-fold or 600 standard C-fold or 1100 standard single fold paper towels and shall have a waste capacity of 10.5 gal (40 liters). Cabinet, doors and dispenser unit shall be fabricated of alloy 18-8 stainless steel, type 304, 22 gauge. Doors shall be double-pan construction with fiberboard filler, and shall be attached to cabinet side with a full length 3/16" dia. stainless steel multi-staked piano hinge and shall be held closed with a tumbler lock keyed alike to other ASI washroom equipment. Towel dispensing slot shall have a fully hemmed-in rolled edge for snag-free dispensing and user safety. Adjustable guide shall be provided to allow dispensing of multi-fold or C-fold paper towels. Waste receptacle shall be fabricated of corrosion protected steel with hemmed edges and a handle for ease of service removal. Face trim shall be 1" (25.4 mm) wide formed from one piece with no miters, welding or open seams and have a 1/4" (6.4 mm) square return to wall. Structural assembly of body and door components shall be of welded construction. Cabinet shall have no exposed fastening devices or spot welded seams. All exposed surfaces shall be N° 4 satin finish and be protected during shipment with a PVC film easily removable after installation. Unit shall be supplied with SR collar to convert to semi-recessing.

Semi-Recessed Paper Towel Dispenser and Waste Receptacle unit shall be Model N° 0460-2 as manufactured by American Specialties, Inc., 441 Saw Mill River Road, Yonkers, New York 10701-4913

INSTALLATION

Unit is semi-recessed in wall using N° 10 self tapping screws (by others) through concealed mounting holes provided. SR collar is installed on cabinet prior to recessing in wall following procedure described on SR Collar Data Sheet. Note that top of RWO is 3/4" (19mm) below top of unit. Recommended mounting is bottom of RWO 4-3/4" AFF.

Rough Wall Opening (RWO) required is..... 12-3/4"W x 72-1/2"H x 4"D minimum (324mm x 1842mm x 102mm)

OPERATION

Towels are self-feeding until supply is depleted. Unit may be reloaded with a partial load in-place and will continue to feed properly. Waste container is emptied manually on cycle determined by maintenance needs. Locked compartment prevents unauthorized access.

Accessory Specialties

AMERICAN DISPENSER

Desert Ray Products

WATROUS INC.