

- Heavy-Duty, Highly Vandal Resistant
- Saves Water, Energy and Space
- Use In Center of Room (Island Sinks) or Against Wall (Wall Sinks)
- Ideal for Facilities Housing Major Events
- Arranged for Faucets by Others

Descriptions

Island Sinks

Wall Sinks – Faucets by Others

Wall sinks are arranged for faucets by others with 4" centers.

S96-051 (Model 6951A-5): 5-station wall sink

S96-080 (Model 6951A-4): 4-station wall sink

S96-083 (Model 6951A-3): 3-station wall sink

S96-085 (Model 6951A-2): 2-station wall sink

cUPC Certified

The multi-station sinks, models 6950 and 6951 are Uniform Plumbing Code (cUPC) certified through the International Association of Plumbing and Mechanical Officials (IAPMO).

Specifications

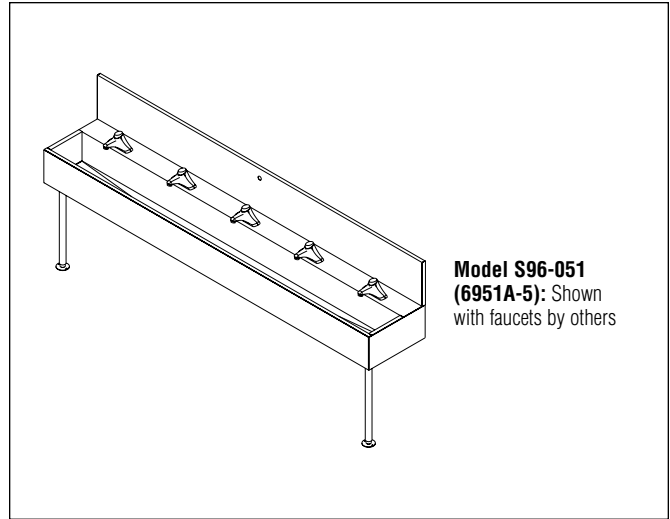
Size and Capacity: Accommodates from 2–8 users at a time (depending upon model chosen), using less water, energy, and space than lavs equipped with conventional faucets.

Construction: Fabricated entirely from 14 gauge type 304 stainless steel. All exterior surfaces are polished to a #4 finish. Sink legs are welded 1-1/2" O.D. stainless steel tubing, with 1-1/2" maximum adjustable-height floor flange.

Vandal Resistance: Sinks are reinforced with stainless steel channels welded to the underside. Valve manifold housings (island sinks only) are secured with vandal-resistant fasteners, and are supported by 4" diameter stainless steel support columns which are welded to the sink and steel channel.

Standard Equipment

Multi-Station Sink Assembly: Fabricated from 14 gauge type 304 stainless steel. All exterior surfaces polished to a #4 finish. Sink legs are 1-1/2" O.D. welded stainless steel tubing with 1-1/2" maximum adjustable-height floor flange. Sinks are reinforced with stainless steel channels welded to the underside. Sink includes drain spud with dome grate strainer and 1-1/2" tubular tailpiece which drains into a 1-1/2" P-trap (provided by others). Valve manifold housing has removable cover secured with vandal-resistant screws (8-station island sink only), and is supported by two 4" diameter stainless steel support columns which are welded to the reinforced stainless steel sink.



**Model S96-051
(6951A-5):** Shown
with faucets by others

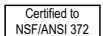
Models (Must Select One)

Model No.	Type	Mtg.	Stations	Faucets
<input type="checkbox"/> S96-051 (6951A-5)*	Wall Sink	Wall	5	By Others
<input type="checkbox"/> S96-080 (6951A-4)*	Wall Sink	Wall	4	By Others
<input type="checkbox"/> S96-083 (6951A-3)*	Wall Sink	Wall	3	By Others
<input type="checkbox"/> S96-085 (6951A-2)*	Wall Sink	Wall	2	By Others

*Non-cancelable, non-returnable



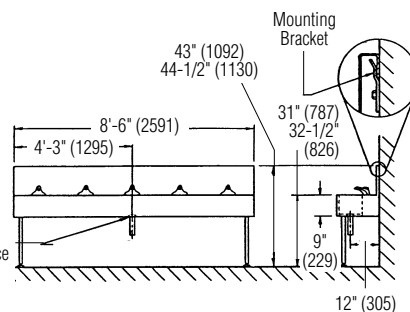
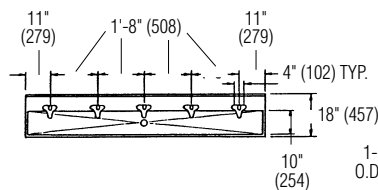
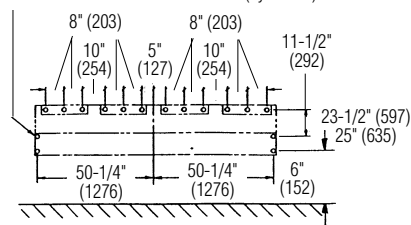
Standard product selections contained within this document are third party **CERTIFIED** to NSF/ANSI 372 meeting the Lead-Free content requirement. Any product configured with custom options will be **COMPLIANT** with NSF/ANSI 372 meeting the Lead-Free content requirement.



Wall Multi-Station Sink Rough-in Dimensions

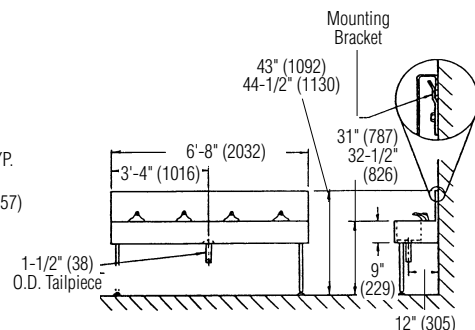
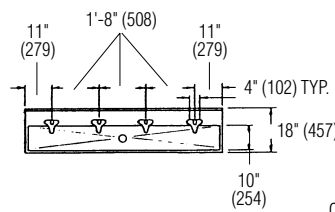
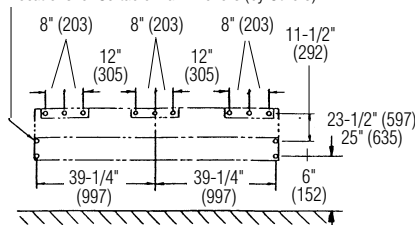
(mm)

Locations for Suitable Wall Anchors (by Others)



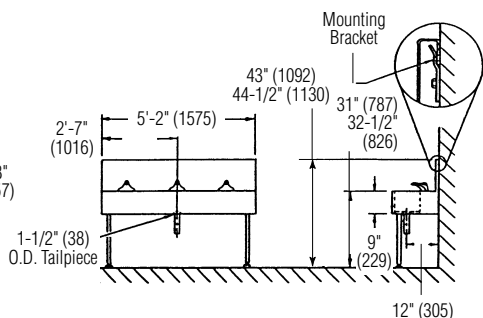
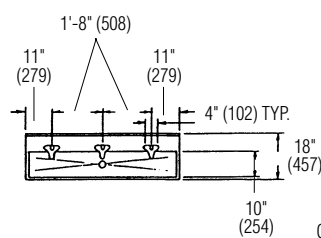
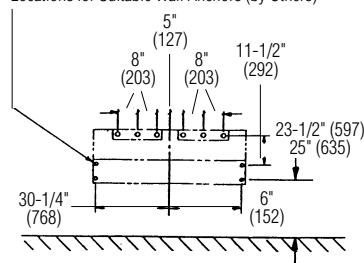
5-Station Wall Sink Model S96-051 (shown with faucets by others)

Locations for Suitable Wall Anchors (by Others)



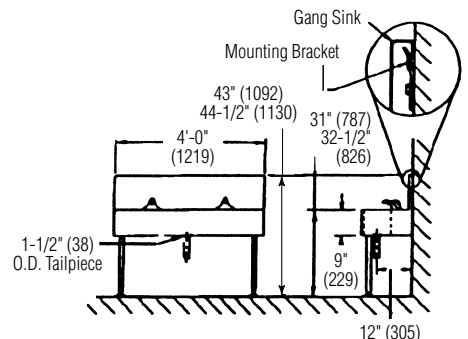
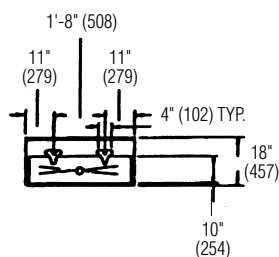
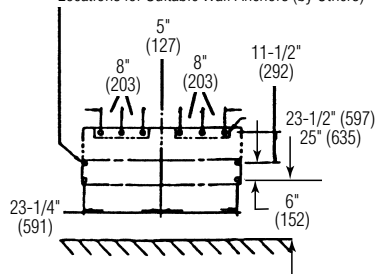
4-Station Wall Sink Model S96-080 (shown with faucets by others)

Locations for Suitable Wall Anchors (by Others)



3-Station Wall Sink Model S96-083 (shown with faucets by others)

Locations for Suitable Wall Anchors (by Others)



2-Station Wall Sink Model S96-085 (shown with faucets by others)